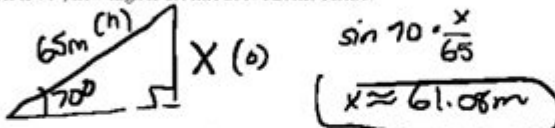


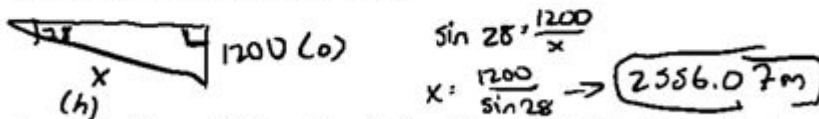
# Angle Of Elevation And Depression Trig Worksheet

## Angle of Elevation & Depression Trig Worksheet

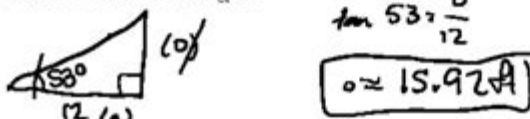
1. Brian's kite is flying above a field at the end of 65 m of string. If the angle of elevation to the kite measures  $70^\circ$ , how high is the kite above Brian's head?



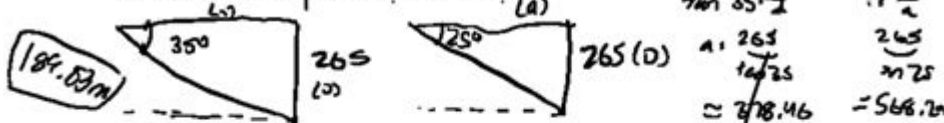
2. From an airplane at an altitude of 1200 m, the angle of depression to a building on the ground measures  $28^\circ$ . Find the distance from the plane to the building.



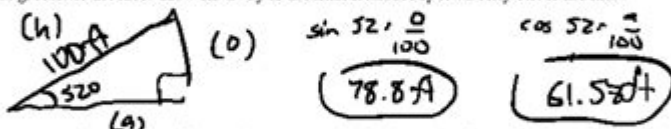
3. From a point on the ground 12 ft from the base of a flagpole, the angle of elevation of the top of the pole measures  $53^\circ$ . How tall is the flagpole?



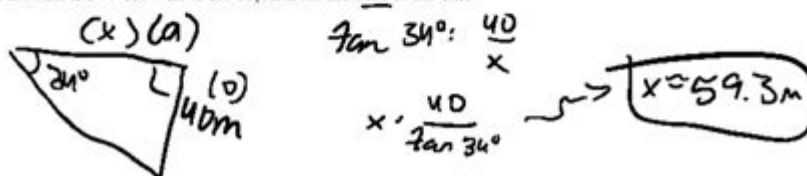
4. From a plane flying due east at 265 m above sea level, the angles of depression of two ships sailing due east measure  $35^\circ$  and  $25^\circ$ . How far apart are the ships?



5. A man flies a kite and lets out 100 feet of string. The angle of elevation of the string is  $52^\circ$ . How high off the ground is the kite? How far away is the man from the spot directly under the kite?



6. From the top of a vertical cliff 40 m high, the angle of depression of an object that is level with the base of the cliff is  $34^\circ$ . How far is the object from the base of the cliff?



## Angle of Elevation and Depression Trig Worksheet: Mastering Trig with Practical Problems

Are you grappling with trigonometry problems involving angles of elevation and depression? Feeling lost in a sea of sine, cosine, and tangent? This comprehensive guide provides you with everything you need to conquer those tricky angle problems, including a downloadable angle of elevation and depression trig worksheet, strategies to solve them, and a deeper understanding of the concepts. We'll break down the complexities into manageable steps, ensuring you build confidence and

achieve mastery. Let's dive in!

## Understanding Angles of Elevation and Depression

Before tackling the worksheet, let's clarify the fundamental concepts. These angles are always measured from the horizontal.

**Angle of Elevation:** This is the angle formed between the horizontal line of sight and the line of sight up to an object above the horizontal. Imagine looking up at a bird; the angle between your horizontal gaze and your upward gaze to the bird is the angle of elevation.

**Angle of Depression:** This is the angle formed between the horizontal line of sight and the line of sight down to an object below the horizontal. Picture yourself looking down from a cliff at a boat; the angle between your horizontal gaze and your downward gaze to the boat is the angle of depression.

It's crucial to remember that the angle of elevation and the angle of depression between two points are always equal (assuming a flat plane). This is due to the alternate interior angles theorem in geometry.

## How to Approach Angle of Elevation and Depression Problems

Solving these problems effectively hinges on a systematic approach:

1. **Draw a Diagram:** This is the most crucial step. Sketch a right-angled triangle representing the scenario. Clearly label the known sides (opposite, adjacent, hypotenuse) and the unknown angle(s).
2. **Identify the Trigonometric Function:** Determine which trigonometric function (sine, cosine, or tangent) relates the known and unknown values. Remember:

SOH: Sine = Opposite / Hypotenuse

CAH: Cosine = Adjacent / Hypotenuse

TOA: Tangent = Opposite / Adjacent

3. **Set up the Equation:** Substitute the known values into the chosen trigonometric function.

4. **Solve for the Unknown:** Use algebraic manipulation to isolate the unknown variable (either the angle or a side length). You'll likely need a calculator to find inverse trigonometric functions (e.g.,  $\sin^{-1}$ ,  $\cos^{-1}$ ,  $\tan^{-1}$ ).

5. **Check Your Answer:** Always review your work to ensure your answer is reasonable and makes sense within the context of the problem.

## Example Problem: Angle of Elevation

A bird sits atop a 20-meter tall tree. From a point on the ground 15 meters from the base of the tree, what is the angle of elevation to the bird?

1. Diagram: Draw a right-angled triangle with the tree height as the opposite side (20m), the distance from the tree as the adjacent side (15m), and the angle of elevation as the unknown angle ( $\theta$ ).
2. Trigonometric Function: We know the opposite and adjacent sides, so we use the tangent function:  $\tan(\theta) = \text{Opposite} / \text{Adjacent}$
3. Equation:  $\tan(\theta) = 20/15$
4. Solve:  $\theta = \tan^{-1}(20/15) \approx 53.13^\circ$
5. Answer: The angle of elevation to the bird is approximately  $53.13^\circ$ .

## Downloadable Angle of Elevation and Depression Trig Worksheet

[Here you would insert a link to a downloadable PDF worksheet. This worksheet should contain a variety of problems of increasing difficulty, covering different scenarios and requiring the application of all three trigonometric functions.]

## Tips for Success

**Practice Regularly:** Consistent practice is key to mastering trigonometry. Work through many problems, starting with simpler ones and gradually increasing the difficulty.

**Use a Calculator:** A scientific calculator is essential for solving trigonometric equations.

**Understand the Concepts:** Don't just memorize formulas; understand the underlying principles of angles of elevation and depression.

**Seek Help When Needed:** Don't hesitate to ask your teacher, tutor, or classmates for help if you're struggling.

# Conclusion

Mastering angles of elevation and depression requires a solid understanding of trigonometry and a systematic problem-solving approach. By following the steps outlined above and practicing regularly using the provided worksheet, you'll build confidence and proficiency in solving these types of problems. Remember, the key is to visualize the problem, draw a diagram, and choose the correct trigonometric function.

## FAQs

1. What if the problem doesn't give me a right-angled triangle? You might need to divide the problem into smaller right-angled triangles to solve it.
2. How do I handle problems with multiple angles? Break the problem down into smaller parts, solving for one angle at a time, using previously calculated values to solve for subsequent angles.
3. Can I use radians instead of degrees? Yes, you can use radians, but make sure your calculator is set to the correct mode (radians or degrees).
4. What are some real-world applications of angles of elevation and depression? Surveying, navigation, architecture, and meteorology all utilize these concepts.
5. Where can I find more practice problems? Search online for "trigonometry word problems" or consult your textbook for additional exercises.

**angle of elevation and depression trig worksheet:** *Key Maths* David Baker, 2002-02-25  
Developed for the OCR Specification, revised for the new National Curriculum and the new GCSE specifications. The Teacher File contains detailed support and guidance on advanced planning, points of emphasis, key words, notes for the non-specialist, useful supplementary ideas and homework sheets.

**angle of elevation and depression trig worksheet: Key Maths** David Baker, 2001  
Developed for the EDEXCEL specification, this course provides preparation for GCSE success with a practical approach. Detailed support and guidance are contained in the Teacher Files on advanced planning, points of emphasis, key-words, notes for the non-specialist, useful supplementary ideas, and homework sheets.

**angle of elevation and depression trig worksheet: Assignments in Junior Measurement**  
Paul Steenson, 2004  
A collection of fresh and versatile worksheet activities, which may be photocopied for student use. Topics covered include review of trigonometry principles, exact ratios, the Sine Rule, Cosine Rule, problems involving two triangles, area of a triangle, simple trigonometric equations. Suitable for students in Years 7-10.

**angle of elevation and depression trig worksheet:** *Algebra and Trigonometry* Jay P. Abramson, Valeree Falduto, Rachael Gross (Mathematics teacher), David Lippman, Rick Norwood, Melonie Rasmussen, Nicholas Belloit, Jean-Marie Magnier, Harold Whipple, Christina Fernandez, 2015-02-13  
The text is suitable for a typical introductory algebra course, and was developed to be

used flexibly. While the breadth of topics may go beyond what an instructor would cover, the modular approach and the richness of content ensures that the book meets the needs of a variety of programs.--Page 1.

**angle of elevation and depression trig worksheet: Excel Essential Skills** A. S. Kalra, 2004 This book is suitable for students studying Year 9 Mathematics. It has been specifically written to help students revise their work and succeed in all their class tests, half-yearly and yearly exams. This is a revised and extended edition with over fifty extra pages of work for students to complete. In this book you will find: Topics covering the complete Year 9 Australian Curriculum Mathematics course Over 170 pages of practice exercises Fifteen topic tests Four practice exams Answers to all questions

**angle of elevation and depression trig worksheet: Trigonometric Delights** E. Maor, 1998 In this book, Maor rejects the usual arid descriptions of the sine and cosine functions and their trigonometric relatives. He brings the subject to life in a compelling blend of mathematics, history, and biography. From the 'proto-trigonometry' of the Egyptian pyramid builders to Renaissance Europe's quest for more accurate artillery, from the earliest known trigonometric table.....

**angle of elevation and depression trig worksheet: Precalculus** Jay P. Abramson, Valeree Falduto, Rachael Gross (Mathematics teacher), David Lippman, Melonie Rasmussen, Rick Norwood, Nicholas Belloit, Jean-Marie Magnier, Harold Whipple, Christina Fernandez, 2014-10-23 Precalculus is intended for college-level precalculus students. Since precalculus courses vary from one institution to the next, we have attempted to meet the needs of as broad an audience as possible, including all of the content that might be covered in any particular course. The result is a comprehensive book that covers more ground than an instructor could likely cover in a typical one- or two-semester course; but instructors should find, almost without fail, that the topics they wish to include in their syllabus are covered in the text. Many chapters of OpenStax College Precalculus are suitable for other freshman and sophomore math courses such as College Algebra and Trigonometry; however, instructors of those courses might need to supplement or adjust the material. OpenStax will also be releasing College Algebra and Algebra and trigonometry titles tailored to the particular scope, sequence, and pedagogy of those courses.--Preface.

**angle of elevation and depression trig worksheet: CK-12 Calculus** CK-12 Foundation, 2010-08-15 CK-12 Foundation's Single Variable Calculus FlexBook introduces high school students to the topics covered in the Calculus AB course. Topics include: Limits, Derivatives, and Integration.

**angle of elevation and depression trig worksheet: Saxon Algebra 1** Saxpub, 2008 Algebra 1 covers all the topics in a first-year algebra course and builds the algebraic foundation essential for all students to solve increasingly complex problems. Higher order thinking skills use real-world applications, reasoning and justification to make connections to math strands. Algebra 1 focuses on algebraic thinking and multiple representations -- verbal, numeric, symbolic, and graphical. Graphing calculator labs model mathematical situations. - Publisher.

**angle of elevation and depression trig worksheet: Teaching Mathematics at Secondary Level** Tony Gardiner, 2016-02-08 Teaching Mathematics is nothing less than a mathematical manifesto. Arising in response to a limited National Curriculum, and engaged with secondary schooling for those aged 11–14 (Key Stage 3) in particular, this handbook for teachers will help them broaden and enrich their students' mathematical education. It avoids specifying how to teach, and focuses instead on the central principles and concepts that need to be borne in mind by all teachers and textbook authors—but which are little appreciated in the UK at present. This study is aimed at anyone who would like to think more deeply about the discipline of 'elementary mathematics', in England and Wales and anywhere else. By analysing and supplementing the current curriculum, Teaching Mathematics provides food for thought for all those involved in school mathematics, whether as aspiring teachers or as experienced professionals. It challenges us all to reflect upon what it is that makes secondary school mathematics educationally, culturally, and socially important.

**angle of elevation and depression trig worksheet: Practical Meteorology** Roland Stull,

2018 A quantitative introduction to atmospheric science for students and professionals who want to understand and apply basic meteorological concepts but who are not ready for calculus.

**angle of elevation and depression trig worksheet:** Clinical Case Studies for the Family Nurse Practitioner Leslie Neal-Boylan, 2011-11-28 Clinical Case Studies for the Family Nurse Practitioner is a key resource for advanced practice nurses and graduate students seeking to test their skills in assessing, diagnosing, and managing cases in family and primary care. Composed of more than 70 cases ranging from common to unique, the book compiles years of experience from experts in the field. It is organized chronologically, presenting cases from neonatal to geriatric care in a standard approach built on the SOAP format. This includes differential diagnosis and a series of critical thinking questions ideal for self-assessment or classroom use.

**angle of elevation and depression trig worksheet: Integrated Math, Course 2, Student Edition** CARTER 12, McGraw-Hill Education, 2012-03-01 Includes: Print Student Edition

**angle of elevation and depression trig worksheet:** *Engineering Surveying* W Schofield, Mark Breach, 2007-02-14 Engineering surveying involves determining the position of natural and man-made features on or beneath the Earth's surface and utilizing these features in the planning, design and construction of works. It is a critical part of any engineering project. Without an accurate understanding of the size, shape and nature of the site the project risks expensive and time-consuming errors or even catastrophic failure. This fully updated sixth edition of Engineering Surveying covers all the basic principles and practice of the fundamentals such as vertical control, distance, angles and position right through to the most modern technologies. It includes: \* An introduction to geodesy to facilitate greater understanding of satellite systems \* A fully updated chapter on GPS, GLONASS and GALILEO for satellite positioning in surveying \* All new chapter on the important subject of rigorous estimation of control coordinates \* Detailed material on mass data methods of photogrammetry and laser scanning and the role of inertial technology in them With many worked examples and illustrations of tools and techniques, it suits students and professionals alike involved in surveying, civil, structural and mining engineering, and related areas such as geography and mapping.

**angle of elevation and depression trig worksheet: A Level Mathematics for OCR A Student Book 1 (AS/Year 1)** Ben Woolley, 2017-07-06 New 2017 Cambridge A Level Maths and Further Maths resources help students with learning and revision. Written for the OCR AS/A Level Mathematics specifications for first teaching from 2017, this print Student Book covers the content for AS and the first year of A Level. It balances accessible exposition with a wealth of worked examples, exercises and opportunities to test and consolidate learning, providing a clear and structured pathway for progressing through the course. It is underpinned by a strong pedagogical approach, with an emphasis on skills development and the synoptic nature of the course. Includes answers to aid independent study.

**angle of elevation and depression trig worksheet:** Computed Tomography for Technologists: Exam Review Lois Romans, 2018-07-23 Publisher's Note: Products purchased from 3rd Party sellers are not guaranteed by the Publisher for quality, authenticity, or access to any online entitlements included with the product. Computed Tomography for Technologists: Exam Review, Second Edition, is intended to be used as a companion to Computed Tomography for Technologists: A Comprehensive Text, Second Edition, and as a review of computed tomography on its own. This is an excellent resource for students preparing to take the advanced level certification exam offered by The American Registry of Radiologic Technologists (ARRT).

**angle of elevation and depression trig worksheet: Fundamentals of Geophysics** William Lowrie, 2007-09-20 This second edition of Fundamentals of Geophysics has been completely revised and updated, and is the ideal geophysics textbook for undergraduate students of geoscience with an introductory level of knowledge in physics and mathematics. It gives a comprehensive treatment of the fundamental principles of each major branch of geophysics, and presents geophysics within the wider context of plate tectonics, geodynamics and planetary science. Basic principles are explained with the aid of numerous figures and step-by-step mathematical treatments, and important

geophysical results are illustrated with examples from the scientific literature. Text-boxes are used for auxiliary explanations and to handle topics of interest for more advanced students. This new edition also includes review questions at the end of each chapter to help assess the reader's understanding of the topics covered and quantitative exercises for more thorough evaluation. Solutions to the exercises and electronic copies of the figures are available at [www.cambridge.org/9780521859028](http://www.cambridge.org/9780521859028).

**angle of elevation and depression trig worksheet: Groundwater around the World** Jean Margat, Jac van der Gun, 2013-03-19 This book presents a unique and up-to-date summary of what is known about groundwater on our planet, from a global perspective and in terms of area-specific factual information. Unlike most textbooks on groundwater, it does not deal with theoretical principles, but rather with the overall picture that emerges as a result of countless observations,

**angle of elevation and depression trig worksheet: Precalculus with Limits** Ron Larson, David C. Falvo, Robert P. Hostetler, 2010-05-04 With the same design and feature sets as the market leading Precalculus, 8/e, this addition to the Larson Precalculus series provides both students and instructors with sound, consistently structured explanations of the mathematical concepts. Designed for a two-term course, this text contains the features that have made Precalculus a complete solution for both students and instructors: interesting applications, cutting-edge design, and innovative technology combined with an abundance of carefully written exercises. In addition to a brief algebra review and the core precalculus topics, PRECALCULUS WITH LIMITS, International Edition, covers analytic geometry in three dimensions and introduces concepts covered in calculus.

**angle of elevation and depression trig worksheet: Introduction to Agricultural Engineering Technology** Harry Field, John Solie, 2007-09-05 The third edition of this book exposes the reader to a wide array of engineering principles and their application to agriculture. It presents an array of more or less independent topics to facilitate daily assessments or quizzes, and aims to enhance the students' problem solving ability. Each chapter contains objectives, worked examples and sample problems are included at the end of each chapter. This book was first published in the late 60's by AVI. It remains relevant for post secondary classes in Agricultural Engineering Technology and Agricultural Mechanics, and secondary agriculture teachers.

**angle of elevation and depression trig worksheet: Scientific Basis for Ayurvedic Therapies** Lakshmi C. Mishra, 2003-09-29 Arguably the oldest form of health care, Ayurveda is often referred to as the Mother of All Healing. Although there has been considerable scientific research done in this area during the last 50 years, the results of that research have not been adequately disseminated. Meeting the need for an authoritative, evidence-based reference, Scientific Basis for Ayurvedic Therapies is the first book to analyze and synthesize current research supporting Ayurvedic medicine. This book reviews the latest scientific information, evaluates the research data, and presents it in an easy to use format. The editor has carefully selected topics based on the availability of scientific studies and the prevalence of a disease. With contributions from experts in their respective fields, topics include Ayurvedic disease management, panchkarma, Ayurvedic bhasmas, the current status of Ayurveda in India, clinical research design, and evaluation of typical clinical trials of certain diseases, to name just a few. While there are many books devoted to Ayurveda, very few have any in-depth basis in scientific studies. This book provides a critical evaluation of literature, clinical trials, and biochemical and pharmacological studies on major Ayurvedic therapies that demonstrates how they are supported by scientific data. Providing a natural bridge from Ayurveda to Western medicine, Scientific Basis for Ayurvedic Therapies facilitates the integration of these therapies by health care providers.

**angle of elevation and depression trig worksheet: Maths Quest 10 for the Australian Curriculum** Kylie Boucher, Debbie Kempff, Lyn Elms, Ruth Bakogianis, Douglas Scott, 2012 Maths Quest 10 Maths Quest 10 for the for the Australian Curriculum provides students with essential mathematical skills and knowledge through the content strands of Number and Algebra, Measurement and Geometry, and Statistics and Probability. The Curriculum focuses on students becoming proficient in mathematical understanding, fluency, reasoning and problem solving. Maths

Quest 10 for the Australian Curriculum is specifically written and designed to meet the requirements and aspirations of the Australian Mathematics Curriculum. The student textbook contains the following features: ? clear and engaging design ? judicious use of ICT resources ? Individual pathways activities for every exercise ? a Hungry brain class activity for each chapter ? two new ProjectsPLUS activities ? interactivities ? eLessons ? references to the content and proficiency strands of the new Australian Mathematics Curriculum This title features eBookPLUS: an electronic version of the textbook and a complementary set of targeted digital resources. These flexible and engaging ICT activities are available to you online at the JacarandaPLUS website ([www.jacplus.com.au](http://www.jacplus.com.au)). Your eBookPLUS resources include: ? ProjectsPLUS - unique ICT-based projects that provides opportunities for students to demonstrate creativity, thinking skills and teamwork ? Hungry brain class activities that build on students' prior knowledge and curiosity ? Individual pathways activities to create opportunities for students' to learn at their own pace ? Interactivities to provide hands-on experience and instant feedback on many new and revisited concepts ? eLessons to bring Mathematics alive in the real world ? WorkSHEETS - Word documents designed for easy customisation and editing ? SkillsSHEETS to check students' readiness for the next topic ? interactive revision tests Click here to view Maths Quest 10 for the Australian Curriculum eBookPLUS Click here to view our range of Mathematics Australian Curriculum Value Packs

**angle of elevation and depression trig worksheet: Snow, Weather, and Avalanches** , 2004 laminated front and back cover with plastic spiral binding

**angle of elevation and depression trig worksheet: Trigonometry** Michael Corral, 2012-03-20 This book covers elementary trigonometry. It is suitable for a one-semester course at the college level, though it could also be used in high schools. The prerequisites are high school algebra and geometry.

**angle of elevation and depression trig worksheet: Precalculus** Robert F. Blitzer, 2014 Bob Blitzer has inspired thousands of students with his engaging approach to mathematics, making this beloved series the #1 in the market. Blitzer draws on his unique background in mathematics and behavioral science to present the full scope of mathematics with vivid applications in real-life situations. Students stay engaged because Blitzer often uses pop-culture and up-to-date references to connect math to students' lives, showing that their world is profoundly mathematical.

**angle of elevation and depression trig worksheet: Oxford Guide to Behavioural Experiments in Cognitive Therapy** Khadj Rouf, 2004-05-06 Behavioural experiments are one of the central and most powerful methods of intervention in cognitive therapy. Yet until now, there has been no volume specifically dedicated to guiding physicians who wish to design and implement behavioural experiments across a wide range of clinical problems. The Oxford Guide to Behavioural Experiments in Cognitive Therapy fills this gap. It is written by clinicians for clinicians. It is a practical, easy to read handbook, which is relevant for practising clinicians at every level, from trainees to cognitive therapy supervisors. Following a foreword by David Clark, the first two chapters provide a theoretical and practical background for the understanding and development of behavioural experiments. Thereafter, the remaining chapters of the book focus on particular problem areas. These include problems which have been the traditional focus of cognitive therapy (e.g. depression, anxiety disorders), as well as those which have only more recently become a subject of study (bipolar disorder, psychotic symptoms), and some which are still in their relative infancy (physical health problems, brain injury). The book also includes several chapters on transdiagnostic problems, such as avoidance of affect, low self-esteem, interpersonal issues, and self-injurious behaviour. A final chapter by Christine Padesky provides some signposts for future development. Containing examples of over 200 behavioural experiments, this book will be of enormous practical value for all those involved in cognitive behavioural therapy, as well as stimulating exploration and creativity in both its readers and their patients.

**angle of elevation and depression trig worksheet: Assessment of Climate Change over the Indian Region** R. Krishnan, J. Sanjay, Chellappan Gnanaseelan, Milind Mujumdar, Ashwini Kulkarni, Supriyo Chakraborty, 2020-06-12 This open access book discusses the impact of

human-induced global climate change on the regional climate and monsoons of the Indian subcontinent, adjoining Indian Ocean and the Himalayas. It documents the regional climate change projections based on the climate models used in the IPCC Fifth Assessment Report (AR5) and climate change modeling studies using the IITM Earth System Model (ESM) and CORDEX South Asia datasets. The IPCC assessment reports, published every 6-7 years, constitute important reference materials for major policy decisions on climate change, adaptation, and mitigation. While the IPCC assessment reports largely provide a global perspective on climate change, the focus on regional climate change aspects is considerably limited. The effects of climate change over the Indian subcontinent involve complex physical processes on different space and time scales, especially given that the mean climate of this region is generally shaped by the Indian monsoon and the unique high-elevation geographical features such as the Himalayas, the Western Ghats, the Tibetan Plateau and the adjoining Indian Ocean, Arabian Sea, and Bay of Bengal. This book also presents policy relevant information based on robust scientific analysis and assessments of the observed and projected future climate change over the Indian region.

**angle of elevation and depression trig worksheet: Maththatmatters 2** David Stocker, 2017 In his follow-up to the groundbreaking Maththatmatters, David Stocker gives us Maththatmatters2 a collection of 50 brilliant lessons for grades 6-9 that link mathematics and social justice. For educators keen to provide rich learning opportunities and differentiated content that engages students with their lived realities, these lessons are sure to spark meaningful discussions...and action.

**angle of elevation and depression trig worksheet: Investigating Mathematics Teaching** Barbara Jaworski, 1994 The author charts her developing ideas as she undertakes a several-year-long inquiry into an investigative, constructivist approach to mathematics teaching. She presents an account of constructivism as a philosophy of knowledge and learning, provides a rationale for the research methods she employs, and details case studies in the teaching and thinking of three teachers. The research took place in the UK before the introduction of the National Curriculum. Annotation copyright by Book News, Inc., Portland, OR

**angle of elevation and depression trig worksheet: Tattooed Skin and Health** J. Serup, N. Kluger, W. Bäuml, 2015-03-26 With about 10-20% of the adult population in Europe being tattooed, there is a strong demand for publications discussing the various issues related to tattooed skin and health. Until now, only a few scientific studies on tattooing have been published. This book discusses different aspects of the various medical risks associated with tattoos, such as allergic reactions from red tattoos, papulo-nodular reactions from black tattoos as well as technical and psycho-social complications, in addition to bacterial and viral infections. Further sections are dedicated to the composition of tattoo inks, and a case is made for the urgent introduction of national and international regulations. Distinguished authors, all specialists in their particular fields, have contributed to this publication which provides a comprehensive view of the health implications associated with tattooing. The book covers a broad range of topics that will be of interest to clinicians and nursing staff, toxicologists and regulators as well as laser surgeons who often face the challenge of having to remove tattoos, professional tattooists and producers of tattoo ink.

**angle of elevation and depression trig worksheet: Mindful Spontaneity** Ruthy Alon, 1996 Ruthy Alon's description of Feldenkrais work in Mindful Spontaneity is a favored text of a generation of Feldenkrais enthusiasts. Alon weaves experiential and theoretical information in a poetic yet pragmatic language. These simple and unexpected suggestions will help everyone who suffers from restricted movement or pain to find a new sense of freedom.

**angle of elevation and depression trig worksheet: Assistive Technology for Visually Impaired and Blind People** Marion Hersh, Michael A Johnson, 2010-05-12 Equal accessibility to public places and services is now required by law in many countries. For the vision-impaired, specialised technology often can provide a fuller enjoyment of the facilities of society, from large scale meetings and public entertainments to reading a book or making music. This volume explores the engineering and design principles and techniques used in assistive technology for blind and

vision-impaired people. This book maintains the currency of knowledge for engineers and health workers who develop devices and services for people with sight loss, and is an excellent source of reference for students of assistive technology and rehabilitation.

**angle of elevation and depression trig worksheet:** Mathematics Fabio Cirrito, Patrick Tobin, 2004

**angle of elevation and depression trig worksheet: The Rotation of the Earth** Walter H. Munk, Gordon J. F. MacDonald, 2009-03-19 This book gives an account of certain observed irregularities on the rotation of the Earth, both in its rate of rotation (giving a variable length of day) and in the position of its axis. These irregularities are caused by events on and within the Earth and provide a means of studying a number of geophysical problems. Seasonal shifts in air masses and variable winds are causes of short-period fluctuations in the rotation. Climatic changes and their attendant sea levels are in part responsible for long-term fluctuations. Modern observations of the Moon and descriptions of ancient eclipses both establish a secular increase in the length of day. The interpretation involves atmospheric, oceanic and bodily tides. The book provides a unified treatment of the rotation of the Earth, making this method of studying geophysical phenomena more readily accessible to geophysicists and others.

**angle of elevation and depression trig worksheet:** CURRENT Essentials of Medicine, Fourth Edition Lawrence M. Tierney, Sanjay Saint, Mary A. Whooley, 2010-11-12 The perfect quick reference on the wards and in the clinic! The famous one disease per page design! CURRENT Essentials of Medicine is a practical, point-of-care pocket handbook that offers nutshell information on the diagnosis and treatment of more than 500 medical disorders seen in both primary care and hospital settings. Perfect as a quick reference on the wards or in a busy clinic, this is THE ONLY pocket guide to offer disease essentials in a one-disease-per-page bulleted format. Practical pearls, for which the authors are well known, are offered for almost all conditions. Features To-the-point information on the diagnosis and treatment of more than 500 of the most common diseases seen in clinical practice Convenient one-disease-per page presentation Bulleted data for each disease covering Essentials of Diagnosis, Differential Diagnosis, Treatment, Pearl, and Reference Encompasses both ambulatory and inpatient medicine Includes internal medicine, plus specialties such as obstetrics/gynecology, surgery, and pediatrics Updated clinical manifestations, diagnostic tests, and treatment considerations throughout

**angle of elevation and depression trig worksheet: McGraw-Hill Ryerson Mathematics 11** Chris Dearling, Janice Nixon, 2002

**angle of elevation and depression trig worksheet: Introduction to Sports Medicine and Athletic Training** Robert France, 2010-01-01 INTRODUCTION TO SPORTS MEDICINE & ATHLETIC TRAINING 2E is designed for individuals interested in athletics and the medical needs of athletes. It is the first full-concept book around which an entire course can be created. This book covers sports medicine, athletic training and anatomy and physiology in an easy to understand format that allows the reader to grasp functional concepts of the human body and then apply this knowledge to sports medicine and athletic training. Comprehensive chapters on nutrition, sports psychology, kinesiology and therapeutic modalities are included. Instructors will appreciate both the depth of the material covered in this unique book and the ease in which it is presented. Important Notice: Media content referenced within the product description or the product text may not be available in the ebook version.

**angle of elevation and depression trig worksheet: Therapeutic Exercise** William D. Bandy, Barbara Sanders, 2001 This entirely new resource focuses on the implementation of treatment plans and intervention using the newest appropriate therapeutic exercise techniques. It provides descriptions and rationale for use of a wide range of exercises to improve a patient's function and health status and to prevent potential future problems. The description of the purpose, position and procedure is given for each technique, providing a complete understanding of the exercise. Features include Pediatric and Geriatric Boxes, Case Studies, and Clinical Guidelines. Fourteen contributors in the fields of exercise science and physical therapy make the text a comprehensive, well-rounded

overview of therapeutic exercise techniques.

**angle of elevation and depression trig worksheet: Precalculus with Trigonometry** Paul A. Foerster, 2007

**angle of elevation and depression trig worksheet: A Different Kind of Classroom** Robert J. Marzano, 2006

The Archangel Michael—Who Is He? - JW.ORG

Michael, referred to by some as 'Saint Michael,' is a name given to Jesus before and after his life on earth. Why is that a reasonable conclusion?

### **Pierre d'angle : définition et explication | Dictionnaire biblique**

Découvrez le sens de « pierre d'angle », expression que l'on trouve dans la Bible, ainsi que des exemples de versets dans lesquels « pierre d'angle » apparaît.

*Bible Videos —Essential Teachings - JW.ORG*

Short video lessons that answer essential Bible questions, such as: Why did God create the earth? What is the condition of the dead? Why does God allow suffering?

### **Who or What Are Angels? | Bible Questions - JW.ORG**

Angels have greater power than humans and they exist in heaven, or the spirit realm. What else does the Bible say about angels? What about guardian angels?

*Did Jesus Die on a Cross? | Bible Questions - JW.ORG*

Many view the 'Christian' cross as a symbol of Christianity. Should we use it in worship? Did Jesus die on a cross? What do the Greek words stauros and xylon mean?

*Imite a los ángeles fieles | Estudio de La Atalaya - JW.ORG*

CUANDO Jehová lo trajo a la verdad, lo invitó a formar parte de su familia de adoradores. Esa familia es cariñosa y muy variada, pues no solo está compuesta de nuestros hermanos de todo el ...

### **What Is the Truth About Angels? - JW.ORG**

Learn about the good things that angels do, the dangers of spiritism, and how we can protect ourselves from Satan and the demons.

### **The Good News According to Jesus - JW.ORG**

Learn more about Jesus Christ, the Son of God and Savior of mankind, in this exciting video series.

*Episode 3: "I Am He" - JW.ORG*

Jesus reveals his role as the Messiah to Nicodemus, a Samaritan woman, and the townspeople of Nazareth, but only a few rightharted ones accept him. After performing a life-changing miracle, ...

### **Angels in the Bible - JW.ORG**

The Bible reveals the truth about angels and demons. Are these spirit creatures real? Can they help us or harm us?

*The Archangel Michael—Who Is He? - JW.ORG*

Michael, referred to by some as 'Saint Michael,' is a name given to Jesus before and after his life on earth. Why is that a reasonable conclusion?

### **Pierre d'angle : définition et explication | Dictionnaire biblique**

Découvrez le sens de « pierre d'angle », expression que l'on trouve dans la Bible, ainsi que des

exemples de versets dans lesquels « pierre d'angle » apparaît.

### **Bible Videos —Essential Teachings - JW.ORG**

Short video lessons that answer essential Bible questions, such as: Why did God create the earth? What is the condition of the dead? Why does God allow suffering?

#### Who or What Are Angels? | Bible Questions - JW.ORG

Angels have greater power than humans and they exist in heaven, or the spirit realm. What else does the Bible say about angels? What about guardian angels?

### **Did Jesus Die on a Cross? | Bible Questions - JW.ORG**

Many view the 'Christian' cross as a symbol of Christianity. Should we use it in worship? Did Jesus die on a cross? What do the Greek words stauros and xylon mean?

### **Imite a los ángeles fieles | Estudio de La Atalaya - JW.ORG**

CUANDO Jehová lo trajo a la verdad, lo invitó a formar parte de su familia de adoradores. Esa familia es cariñosa y muy variada, pues no solo está compuesta de nuestros hermanos de ...

#### *What Is the Truth About Angels? - JW.ORG*

Learn about the good things that angels do, the dangers of spiritism, and how we can protect ourselves from Satan and the demons.

### **The Good News According to Jesus - JW.ORG**

Learn more about Jesus Christ, the Son of God and Savior of mankind, in this exciting video series.

### **Episode 3: "I Am He" - JW.ORG**

Jesus reveals his role as the Messiah to Nicodemus, a Samaritan woman, and the townspeople of Nazareth, but only a few righteous ones accept him. After performing a life-changing ...

#### Angels in the Bible - JW.ORG

The Bible reveals the truth about angels and demons. Are these spirit creatures real? Can they help us or harm us?

[Back to Home](#)