

# Dr M The Science Femme



## Dr. M the Science Femme

@drmthesciencefemme

821 subscribers • 30 videos

Teaching you the science of everyday life, while looking like this  
💖💖💖 ...more

Manage videos



Home

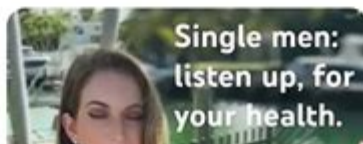
Videos

Shorts

Playlists

Communit

### For You



## Dr. M: The Science Femme - Unveiling the Power Behind the Persona

Are you intrigued by the enigmatic figure of "Dr. M: The Science Femme"? This isn't your typical scientist stereotype. This post delves deep into the persona, exploring the fascinating intersection of science, femininity, and public image. We'll uncover the potential marketing strategies behind this intriguing brand, analyze its impact, and discuss the broader implications of presenting science in a more accessible and engaging way. Get ready to dissect the brilliance behind "Dr. M" and learn how you can apply similar principles to your own brand or scientific communication.

# **Understanding the "Dr. M: The Science Femme" Phenomenon**

The term "Dr. M: The Science Femme" likely represents a deliberate branding strategy. It aims to capture attention by contrasting traditional perceptions of scientists with a modern, feminine, and potentially empowered image. This approach challenges stereotypes and makes science more relatable to a broader audience, particularly young women considering STEM careers.

## **The Power of Contrast: Challenging Scientific Stereotypes**

For decades, the image of a scientist has been dominated by male figures in lab coats. "Dr. M" actively subverts this by presenting a female scientist, likely emphasizing her expertise and achievements while consciously showcasing her femininity. This contrast is a powerful marketing tool, drawing attention and sparking curiosity.

## **Accessibility and Engagement: Breaking Down Barriers**

The "Femme" aspect goes beyond simple gender representation. It suggests accessibility and engagement. The term evokes a sense of approachability, potentially softening the often-intimidating image associated with complex scientific concepts. This strategy makes science more digestible and appealing to a wider audience.

## **Marketing Implications: Building a Brand Around Science**

"Dr. M: The Science Femme" signifies a smart marketing approach. It leverages the power of branding to create a memorable and distinctive identity. This persona can be used across various platforms – from social media to public speaking engagements – to build a loyal following and establish credibility.

## **Analyzing the Impact of "Dr. M"**

The impact of a persona like "Dr. M" is multifaceted. It can significantly influence:

## **Public Perception of Science: Making Science More Relatable**

By presenting science in a relatable and engaging way, "Dr. M" potentially inspires more people, especially young women, to pursue STEM careers. It breaks down barriers and challenges the perception that science is solely a male domain.

## **Inspiring the Next Generation: Role Models and Representation**

"Dr. M" acts as a powerful role model, demonstrating that women can excel in science and technology while maintaining their individual identities. This representation is crucial for encouraging diversity and inclusion within STEM fields.

## **Enhancing Scientific Communication: Accessibility and Clarity**

The persona facilitates effective scientific communication. By using a more engaging and approachable style, complex scientific concepts can be conveyed to a broader audience, increasing scientific literacy and public understanding.

## **Applying the "Dr. M" Strategy: Tips for Your Own Brand**

You can apply elements of the "Dr. M" strategy to enhance your own personal branding or scientific communication:

### **Develop a Strong Personal Brand: Authenticity and Clarity**

Define your unique strengths and values. Craft a personal brand that reflects your authenticity and expertise. Clarity in messaging is vital for building a strong online presence.

### **Leverage Visual Identity: Professionalism and Approachability**

Invest in high-quality visuals that convey both professionalism and approachability. Your online presence should reflect the image you want to project.

## **Engage Your Audience: Interaction and Community Building**

Utilize social media and other platforms to interact with your audience. Building a community around your brand fosters loyalty and credibility.

## **Tell Your Story: Authenticity and Connection**

Share your personal experiences and passions. Authenticity creates a deeper connection with your audience and makes you more relatable.

## **Conclusion**

"Dr. M: The Science Femme" represents a powerful example of branding and effective scientific communication. By challenging stereotypes, increasing accessibility, and leveraging a strong personal brand, this persona inspires and educates. This approach demonstrates the potential to make science more inclusive, engaging, and relatable to a wider audience, leaving a lasting impact on the future of STEM.

## **FAQs**

1. Is "Dr. M" a real person, or is it a fictional persona? The exact nature of "Dr. M" is unclear; it may be a fictional character developed for marketing purposes or it could be a real person using a brand name. The effectiveness lies in the image and message it conveys.
2. How can I adapt this branding strategy to my own field? Identify your key strengths and unique selling points. Develop a clear message and visual identity that reflects these elements. Focus on creating an approachable and relatable image.
3. What are some potential drawbacks of this branding approach? Potential drawbacks include accusations of being inauthentic or oversimplifying complex scientific concepts. It's crucial to maintain integrity and avoid misleading your audience.
4. How important is social media in building a brand like "Dr. M"? Social media is crucial for reaching a wide audience, engaging with potential followers, and building community. Consistent and strategic social media use is key.

5. Can this strategy be applied across different scientific fields? Absolutely. The principles of building an engaging, relatable, and authentic personal brand are applicable to any scientific field. The specific approach and messaging would need adaptation to suit the context.

**dr m the science femme:** *Cahiers de la Femme* , 1982

**dr m the science femme: Academy; a Weekly Review of Literature, Learning, Science and Art** , 1869 The Poetical gazette; the official organ of the Poetry society and a review of poetical affairs, nos. 4-7 issued as supplements to the Academy, v. 79, Oct. 15, Nov. 5, Dec. 3 and 31, 1910

**dr m the science femme: Feminizing Theory** Rhea Ashley Hoskin, 2021-09-09 The term femme originates from 1940s Western working-class lesbian bar culture, wherein femme referred to a feminine lesbian who was typically in a relationship with a butch lesbian. Expanding from this original meaning, femme has since emerged as a form of femininity reclaimed by queer and culturally marginalized folks. Importantly, femme has also evolved into a theoretical framework. Femme theory argues that femme constitutes a missing piece in queer and feminist discourses of femininity. Attending to this gap, femme theory centres queer femininities as a means of pushing against the deeply embedded masculinist orientation of queer and gender theory. Thus, femme theory offers tools to shift the way researchers and readers understand femininity as well as systems of gender and power more broadly. This book is an introduction to femme theory, showcasing how femme can be used as a theoretical framework across a variety of contexts and disciplines, such as Film & Media Studies, Psychology, Sociology, or Critical Disability Studies; from countries, including Canada, China, Guyana and the USA. Femme theory asks readers to reconsider how femininity is conceptualized, revealing some of the many taken for granted assumptions that are embedded within cultural discourses of gender, sexuality, and power. The chapters in this book were originally published as a special issue of the Journal of Lesbian Studies.

**dr m the science femme:** *The Journal of Mental Science* , 1870 Vol. 77- includes Yearbook of the Association, 1931-

**dr m the science femme: The Medico-chirurgical Review and Journal of Medical Science** , 1824

**dr m the science femme:** *English Mechanic and World of Science* , 1898

**dr m the science femme:** *Dublin journal of medical science* , 1875

**dr m the science femme:** *The Saturday Review of Politics, Literature, Science and Art* , 1856

**dr m the science femme: The Saturday Review of Politics, Literature, Science, Art, and Finance** , 1885

**dr m the science femme:** *Pioneer Work in Opening the Medical Profession to Women* Elizabeth Blackwell, 1895 Elizabeth Blackwell, though born in England, was reared in the United States and was the first woman to receive a medical degree here, obtaining it from the Geneva Medical College, Geneva, New York, in 1849. A pioneer in opening the medical profession to women, she founded hospitals and medical schools for women in both the United States and England. She was a lecturer and writer as well as an able physician and organizer. -- H.W. Orr.

**dr m the science femme: The Dublin Journal of Medical and Chemical Science** , 1836

**dr m the science femme:** *The Feminine Mystique* Betty Friedan, 2010 When Betty Friedan produced *The Feminine Mystique* in 1963, she could not have realized how the discovery and debate of her contemporaries' general malaise would shake up society. Victims of a false belief system, these women were following strict social convention by loyally conforming to the pretty image of the magazines, and found themselves forced to seek meaning in their lives only through a family and a home. Friedan's controversial book about these women - and every woman - would ultimately set Second Wave feminism in motion and begin the battle for equality. This groundbreaking and life-changing work remains just as powerful, important and true as it was forty-five years ago, and is essential reading both as a historical document and as a study of women living in a man's world. 'One of the most influential nonfiction books of the twentieth century.' New York Times 'Feminism

..... began with the work of a single person: Friedan.' Nicholas Lemann With a new Introduction by Lionel Shriver

**dr m the science femme: The Monthly Journal of Medical Science** , 1846

**dr m the science femme: The Educational Times, and Journal of the College of Preceptors** , 1908

**dr m the science femme: Medical Lexicon. A New Dictionary of Medical Science, Containing a Concise Account of the Various Subjects and Terms, ... and Formulae for ... Preparations Etc. Third Edition** Robley DUNGLISON, 1853

**dr m the science femme: Dublin quarterly journal of medical science** , 1859

**dr m the science femme: The Dublin Quarterly Journal of Medical Science** , 1858

**dr m the science femme: The Breeder's Gazette** , 1888

**dr m the science femme: Science** John Michels, 1883

**dr m the science femme: Spiers and Surenné's French and English Pronouncing Dictionary** Alexander Spiers, 1867

**dr m the science femme: General English and French Dictionary** Alexander Spiers, 1849

**dr m the science femme: Saturday Review of Politics, Literature, Science and Art** , 1856

**dr m the science femme: "The" Athenaeum** , 1836

**dr m the science femme: The Dublin Journal of Medical Science** , 1874

**dr m the science femme: The Academy** , 1878

**dr m the science femme: Women In Science** ,

**dr m the science femme: The London Lancet** , 1865

**dr m the science femme: Medico-chirurgical Review and Journal of Medical Science** , 1824

**dr m the science femme: A Dictionary of Medical Science** Robley Dunglison, 1853

**dr m the science femme: The Dublin Journal of Medical Science (1836-1845).** , 1839

**dr m the science femme: THE ACADEMY. A WEEKLY REVIEW OF LITERATURE, SCIENCE, AND ART.** , 1877

**dr m the science femme: The London Medical and Surgical Journal** , 1833

**dr m the science femme: The Athenaeum** James Silk Buckingham, John Sterling, Frederick Denison Maurice, Henry Stebbing, Charles Wentworth Dilke, Thomas Kibble Hervey, William Hepworth Dixon, Norman Maccoll, Vernon Horace Rendall, John Middleton Murry, 1871

**dr m the science femme: Education Outlook** , 1908

**dr m the science femme: Woman in Science** J. A. Zahm, 2022-08-01 DigiCat Publishing presents to you this special edition of Woman in Science (With an Introductory Chapter on Woman's Long Struggle for Things of the Mind) by J. A. Zahm. DigiCat Publishing considers every written word to be a legacy of humankind. Every DigiCat book has been carefully reproduced for republishing in a new modern format. The books are available in print, as well as ebooks. DigiCat hopes you will treat this work with the acknowledgment and passion it deserves as a classic of world literature.

**dr m the science femme: Educational Times** , 1908

**dr m the science femme: The Science of the Child in Liberal Italy** Luisa Tasca,

**dr m the science femme: The Eclectic Magazine of Foreign Literature, Science, and Art** , 1869

**dr m the science femme: The London and Edinburgh Monthly Journal of Medical Science** , 1845

**dr m the science femme: The Journal of science and the arts** , 1817

## Find a Doctor at Orlando Health

Find a Doctor in the Orlando Health network. With more than 2,100 doctors practicing at Orlando Health facilities, we cover a full range of specialties.

### **Medical Center in Orlando, FL | Family Medical Center**

Family Medical Center provides high-quality, comprehensive primary care services to children, adolescents, and adults in the SoDo District of Orlando, Florida.

#### *West Colonial » Innovacare Health*

6336 W Colonial Dr Orlando , Florida 32818 Orange Phone: (407) 259-2383 Fax: (407) 630-6884  
Hours of Operation M-F: 8:00am-5:00pm Request Appointment

### **Family Medical, Dental & Specialty Care in Pine Hills, FL**

Community Health Centers in Pine Hills provides comprehensive medical, dental, and specialty services to children and adults.

### **Best Family Physicians Near Me in Orlando, FL | WebMD**

Finding top-rated Family Physicians near you is simple on WebMD Care. Each physician is listed with their overall patient rating on all search and profile pages. This rating is based on actual...

#### *True Health - Real Choices. Real Care.*

Exceptional obstetrical care and treatment for women before, during, and after pregnancy is a priority for our OB/GYNs. We offer comprehensive and affordable health and medical care for ...

#### *Primary Care Orlando FL | Sanitas Medical Center*

Looking for health care in Orlando? Sanitas Medical Center offers primary care, specialty care and more, all in a single location. Beyond family medicine, we offer health programs, women's ...

### **Healthgrades | Find a Doctor - Doctor Reviews - Online Doctor ...**

Choose Find doctors and hospitals based on the factors that matter most to you. Prepare Learn what you need to know and which questions to ask your doctor. Find more than a good doctor. ...

#### Best Doctors Near Me in Orlando, FL | Zocdoc

2 days ago · Dr. Harold Watson is an esteemed internist who provides medical care at Restora Medical in Orlando, FL, and offers virtual consultations. He earned his Doctor of Medicine ...

### **Vida Medical Clinic**

Our Orlando office is conveniently located near South John Young Parkway near the intersection of Destination Parkway and Futures Drive, behind the Hampton Inn. 7550 Futures Drive, ...

### **Find a Doctor at Orlando Health**

Find a Doctor in the Orlando Health network. With more than 2,100 doctors practicing at Orlando Health facilities, we cover a full range of specialties.

### **Medical Center in Orlando, FL | Family Medical Center**

Family Medical Center provides high-quality, comprehensive primary care services to children, adolescents, and adults in the SoDo District of Orlando, Florida.

#### **West Colonial » Innovacare Health**

6336 W Colonial Dr Orlando , Florida 32818 Orange Phone: (407) 259-2383 Fax: (407) 630-6884  
Hours of Operation M-F: 8:00am-5:00pm Request Appointment

### **Family Medical, Dental & Specialty Care in Pine Hills, FL**

Community Health Centers in Pine Hills provides comprehensive medical, dental, and specialty services to children and adults.

### **Best Family Physicians Near Me in Orlando, FL | WebMD**

Finding top-rated Family Physicians near you is simple on WebMD Care. Each physician is listed with their overall patient rating on all search and profile pages. This rating is based on actual...

### **True Health - Real Choices. Real Care.**

Exceptional obstetrical care and treatment for women before, during, and after pregnancy is a priority for our OB/GYNs. We offer comprehensive and affordable health and medical care for ...

### *Primary Care Orlando FL | Sanitas Medical Center*

Looking for health care in Orlando? Sanitas Medical Center offers primary care, specialty care and more, all in a single location. Beyond family medicine, we offer health programs, women's ...

### **Healthgrades | Find a Doctor - Doctor Reviews - Online Doctor ...**

Choose Find doctors and hospitals based on the factors that matter most to you. Prepare Learn what you need to know and which questions to ask your doctor. Find more than a good doctor. ...

### **Best Doctors Near Me in Orlando, FL | Zocdoc**

2 days ago · Dr. Harold Watson is an esteemed internist who provides medical care at Restora Medical in Orlando, FL, and offers virtual consultations. He earned his Doctor of Medicine ...

### *Vida Medical Clinic*

Our Orlando office is conveniently located near South John Young Parkway near the intersection of Destination Parkway and Futures Drive, behind the Hampton Inn. 7550 Futures Drive, ...

[Back to Home](#)