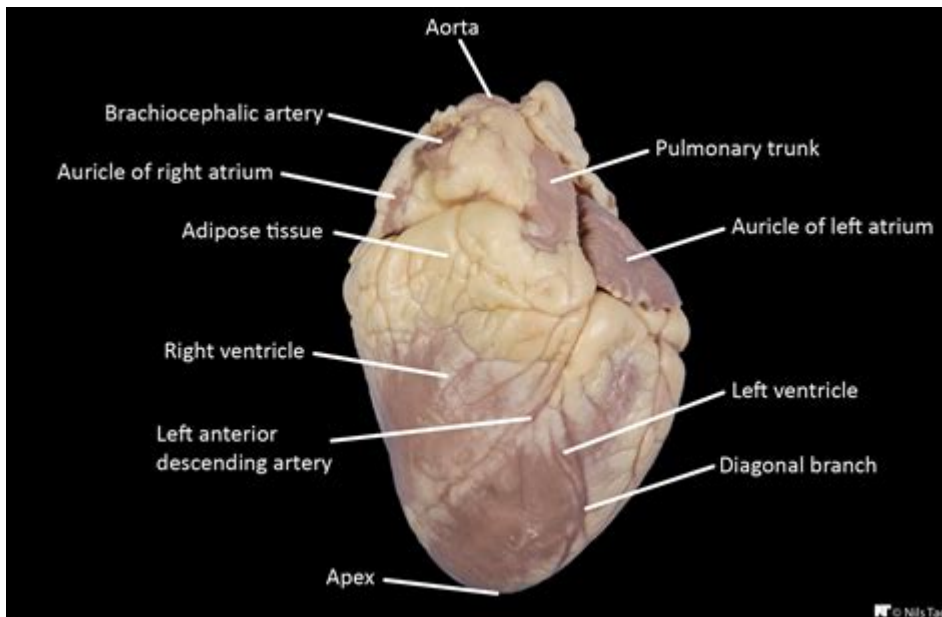


Labeling A Sheep Heart



Labeling a Sheep Heart: A Comprehensive Guide for Students and Educators

Dissecting a sheep heart provides a fascinating hands-on learning experience, offering a tangible understanding of mammalian cardiovascular anatomy. However, the value of this exercise hinges on accurate labeling. This comprehensive guide will equip you with the knowledge and techniques to confidently label a sheep heart, covering everything from essential anatomical features to helpful tips for a successful dissection. We'll walk you through each step, ensuring you master this crucial skill for biology students and educators alike.

Gathering Your Materials: Preparing for the Dissection

Before you begin the exciting process of labeling your sheep heart, ensure you have all the necessary materials assembled. This meticulous preparation will enhance your learning experience and ensure a smooth dissection. Here's a checklist:

Preserved Sheep Heart: A properly preserved specimen is crucial. Look for a heart that maintains its structural integrity and shows clear anatomical features.

Dissecting Tray: A firm, non-slip surface will protect your workspace and prevent accidental damage to the heart.

Dissecting Kit: This typically includes forceps, scissors (both blunt and sharp), probes, and a scalpel (if required – depending on the level of dissection).

Gloves: Always prioritize safety and wear appropriate gloves to protect yourself from any potential

hazards.

Labeled Diagram: Having a pre-labeled diagram of a sheep heart is invaluable. This serves as a reference point throughout the dissection process.

Markers: Use waterproof markers to directly label the sheep heart. Avoid using pens as the ink may smudge or bleed.

Rulers and/or measuring tape : Helpful for ensuring accuracy when labeling relative sizes or lengths of structures.

Reference Text/Online Resources: A reliable textbook or online resource can clarify any uncertainties encountered during the labeling process.

Identifying Key Anatomical Structures: A Step-by-Step Guide

The accurate labeling of a sheep heart requires careful identification of its key components. Let's systematically explore the structures you'll need to label:

External Anatomy:

Apex: The pointed lower end of the heart.

Base: The broad, superior portion of the heart.

Coronary Arteries and Veins: These vessels supply blood to the heart muscle itself. Carefully observe their branching pattern.

Atria (Right and Left): The two upper chambers of the heart, receiving blood from the body and lungs.

Ventricles (Right and Left): The two lower chambers of the heart, pumping blood to the lungs and the rest of the body.

Pulmonary Artery: Carries deoxygenated blood from the right ventricle to the lungs.

Aorta: The largest artery in the body, carrying oxygenated blood from the left ventricle.

Superior and Inferior Vena Cava: These veins return deoxygenated blood from the body to the right atrium.

Pulmonary Veins: These veins return oxygenated blood from the lungs to the left atrium.

Internal Anatomy (After Dissection - if appropriate for the learning level):

Heart Valves (Tricuspid, Mitral, Pulmonary, Aortic): These valves ensure one-way blood flow within the heart. Observe their location and function.

Chordae Tendineae: These tendinous cords connect the papillary muscles to the atrioventricular valves.

Papillary Muscles: These muscles prevent the inversion of the atrioventricular valves during ventricular contraction.

Septum (Interventricular and Interatrial): The muscular walls separating the left and right sides of the heart.

Labeling Techniques and Best Practices

Once you've identified the structures, labeling accurately is paramount. Here's how to effectively label your sheep heart:

Use Clear and Concise Labels: Write the name of each structure clearly and legibly next to its location.

Avoid Overcrowding: Ensure labels don't obscure other anatomical features.

Maintain Consistency: Use consistent abbreviations (if any) throughout the labeling process.

Accurate Placement: Place labels as close as possible to the structure they identify.

Consider Color-Coding: If applicable, use different colored markers to differentiate between arteries, veins, and chambers.

Photograph Your Work: Take clear pictures of your labeled heart for future reference.

Beyond the Basics: Enhancing Your Understanding

Beyond simply labeling, actively engaging with the sheep heart provides a deeper understanding of cardiovascular physiology. Consider these additional activities:

Tracing Blood Flow: Trace the pathway of blood through the heart, highlighting the oxygenation process.

Comparing to Human Anatomy: Discuss the similarities and differences between the sheep heart and the human heart.

Investigating Cardiovascular Diseases: Use the heart model to illustrate how various cardiovascular diseases can affect heart function.

Conclusion

Mastering the art of labeling a sheep heart is a foundational skill for any biology student or educator. By following this comprehensive guide and practicing your techniques, you'll confidently navigate the intricacies of mammalian cardiovascular anatomy. Remember that accurate observation, precise labeling, and a commitment to understanding the underlying physiology will make this experience both rewarding and educational.

FAQs

1. Can I use a different animal heart for this exercise? While a sheep heart is commonly used, pig hearts are also suitable due to their similar size and structure. However, the specific anatomy may vary slightly, requiring adjustment to the labeling guide.

2. What if I make a mistake during labeling? Don't worry! Use a cotton swab or tissue to gently

remove any incorrect labels. Then re-label the structure correctly.

3. How long can I preserve the labeled sheep heart? The preservation time depends on the preservation method used. Consult the supplier's instructions for the expected lifespan of your specimen.

4. Are there any online resources to help with identification? Yes! Many websites and educational videos offer detailed visuals and explanations of sheep heart anatomy. Use these resources to support your dissection and labeling process.

5. What safety precautions should I take when handling a preserved sheep heart? Always wear gloves and wash your hands thoroughly after handling the specimen. Ensure proper disposal of any waste materials according to your institution's guidelines.

labeling a sheep heart: Food Standards and Labeling Policy Book United States. Food Safety and Inspection Service. Standards and Labeling Division, 1996

labeling a sheep heart: *Characterization and Affinity Labeling of Type II Catalytic Subunit of CAMP Dependent Protein Kinase* Mark Jay Zoller, 1980

labeling a sheep heart: Hole's Human Anatomy & Physiology John Hole, 1996

labeling a sheep heart: Food Standards and Labeling Policy Book United States. Food Safety and Inspection Service. Regulatory Programs, 1996

labeling a sheep heart: Stem Cell Labeling for Delivery and Tracking Using Noninvasive Imaging Dara L. Kraitchman, Joseph C. Wu, 2011-11-18 Stem Cell Labeling for Delivery and Tracking Using Noninvasive Imaging provides a comprehensive overview of cell therapy imaging, ranging from the basic biology of cell therapeutic choices to the preclinical and clinical applications of cell therapy. It emphasizes the use of medical imaging for therapeutic delivery/targeting, cell tracking, and determining therapeutic efficacy. The book first presents background information and insight on the major classes of stem and progenitor cells. It then describes the main imaging modalities and state-of-the-art techniques that are currently employed for stem cell tracking. In the final chapters, leading scholars offer clinical perspectives on existing and potential uses of stem cells as well as the impact of image-guided delivery and tracking in major organ systems. Through clear descriptions and color images, this volume illustrates how noninvasive imaging is used to track stem cells as they repair damaged tissue in the body. With contributions from some of the most prominent preclinical and clinical researchers in the field, the book helps readers to understand the evolving concepts of stem cell labeling and tracking as the field continues to move forward.

labeling a sheep heart: Designing Foods National Research Council, Board on Agriculture, Committee on Technological Options to Improve the Nutritional Attributes of Animal Products, 1988-02-01 This lively book examines recent trends in animal product consumption and diet; reviews industry efforts, policies, and programs aimed at improving the nutritional attributes of animal products; and offers suggestions for further research. In addition, the volume reviews dietary and health recommendations from major health organizations and notes specific target levels for nutrients.

labeling a sheep heart: Exploring Biology in the Laboratory, 3e Murray P Pendarvis, John L Crawley, 2018-02-01 This full-color, comprehensive, affordable introductory biology manual is appropriate for both majors and nonmajors laboratory courses. All general biology topics are covered extensively, and the manual is designed to be used with a minimum of outside reference material. The activities emphasize the unity of all living things and the evolutionary forces that have resulted in, and continue to act on, the diversity that we see around us today.

labeling a sheep heart: Exploring Anatomy & Physiology in the Laboratory, 4th Edition Erin C Amerman, 2022-01-14 Over three previous editions, Exploring Anatomy & Physiology in the

Laboratory (EAPL) has become one of the best-selling A&P lab manuals on the market. Its unique, straightforward, practical, activity-based approach to the study of anatomy and physiology in the laboratory has proven to be an effective approach for students nationwide. This comprehensive, beautifully illustrated, and affordably priced manual is appropriate for a two-semester anatomy and physiology laboratory course. Through focused activities and by eliminating redundant exposition and artwork found in most primary textbooks, this manual complements the lecture material and serves as an efficient and effective tool for learning in the lab.

labeling a sheep heart: Exploring Anatomy in the Laboratory Erin C. Amerman, 2016-01-01 Exploring Anatomy in the Laboratory is a comprehensive, beautifully illustrated, and affordably priced manual is appropriate for a one-semester anatomy-only laboratory course. Through focused activities and by eliminating redundant exposition and artwork found in most primary textbooks, this manual complements the lecture material and serves as an efficient and effective tool for learning in the lab.

labeling a sheep heart: Standards and Labeling Policy Book United States. Food Safety and Inspection Service. Standards and Labeling Division, 1991

labeling a sheep heart: Laboratory Manual for Clinical Anatomy and Physiology for Veterinary Technicians - E-Book Thomas P. Colville, Joanna M. Bassert, 2023-01-18 Learn to apply your A&P learning in the lab setting with the Laboratory Manual for Clinical Anatomy and Physiology for Veterinary Technicians, 4th Edition. This practical laboratory resource features a variety of activities, such as terminology exercises, illustration identification and labelling, case presentations, and more to help reinforce your understanding of veterinary anatomy and physiology. The laboratory manual also features vivid illustrations, lists of terms and structures to be identified, and step-by-step dissection guides to walk you through the dissection process. - Clinically oriented learning exercises introduce you to the language of anatomy and physiology as you identify structures and learn concepts. - Clear, step-by-step dissection instructions for complex organs such as the heart familiarize you with the dissection process in a very visual, easy-to-understand format. - Learning objectives, the clinical significance of the content, and lists of terms and structures to be identified appear at the beginning of each chapter. - Review activities and study exercises are included in every chapter to reinforce important information. - High-quality, full-color illustrations provide a solid understanding of the details of anatomic structure.

labeling a sheep heart: Electron Spin Resonance P. B. Ayscough, 1983 Specialist Periodical Reports provide systematic and detailed review coverage of progress in the major areas of chemical research. Written by experts in their specialist fields the series creates a unique service for the active research chemist, supplying regular critical in-depth accounts of progress in particular areas of chemistry. For over 80 years the Royal Society of Chemistry and its predecessor, the Chemical Society, have been publishing reports charting developments in chemistry, which originally took the form of Annual Reports. However, by 1967 the whole spectrum of chemistry could no longer be contained within one volume and the series Specialist Periodical Reports was born. The Annual Reports themselves still existed but were divided into two, and subsequently three, volumes covering Inorganic, Organic and Physical Chemistry. For more general coverage of the highlights in chemistry they remain a 'must'. Since that time the SPR series has altered according to the fluctuating degree of activity in various fields of chemistry. Some titles have remained unchanged, while others have altered their emphasis along with their titles; some have been combined under a new name whereas others have had to be discontinued. The current list of Specialist Periodical Reports can be seen on the inside flap of this volume.

labeling a sheep heart: Exploring Anatomy & Physiology in the Laboratory Core Concepts, 2e Erin C Amerman, 2018-02-01 This brief version of Exploring Anatomy and Physiology in the Laboratory, 3e, is intended for one-semester anatomy and physiology courses geared toward allied health students. Exploring Anatomy & Physiology Laboratory: Core Concepts, by Erin C. Amerman is a comprehensive, beautifully illustrated, and affordably priced lab manual that features an innovative, interactive approach to engage your students and help ensure a deeper understanding of

A&P.

labeling a sheep heart: *Standards and Labeling Policy Book* United States. Food Safety and Inspection Service. Standards and Labeling Division, 1991

labeling a sheep heart: *Affinity Modification Of Biopolymers* Dmitri G Knorre, 2018-01-18 The goal of this book is to give a systematic description of the main principles of affinity modification and applications, consideration of possibilities, and restrictions of the method. Modification within specific complexes is a special case of chemical modification which is widely used in the nonaddressed version in biochemistry and related areas. Therefore, we have included in the first introductory paper chapter of the book general considerations of chemical modifications of biopolymers and the application of biopolymers.

labeling a sheep heart: *Laboratory Manual for Clinical Anatomy and Physiology for Veterinary Technicians* Thomas P. Colville, Joanna M. Bassert, 2015-03-31 Learn to apply your A&P learning in the lab setting with Colville and Bassert's Lab Manual for Clinical Anatomy and Physiology for Veterinary Technicians, 3rd Edition. This practical laboratory resource features a variety of activities, such as crossword puzzles, , terminology exercises, illustration identification and labeling, case presentations, and more to help reinforce your understanding of veterinary anatomy and physiology. The lab manual also features vivid illustrations, lists of terms and structures to be identified, and step-by-step dissection guides to walk you through the dissection process. Clinically-oriented learning exercises help readers become familiar with the language of anatomy and physiology as you identify structures and learn concepts. Clear step-by-step dissection instructions for complex organs such as the heart familiarize readers with the dissection process in a very visual, easy-to-understand format. Learning objectives, the clinical significance of the content, and lists of terms and structures to be identified appear at the beginning of each chapter. Comprehensive glossary appears at the end of the lab manual and provides accurate, concise. High quality, full color illustrations provides a firm understanding of the details of anatomic structure. Review activities and study exercises are included in every chapter to reinforce important information. Clinical Application boxes are threaded throughout the lab manual and demonstrate the clinical relevance of anatomic and physiologic principles. Companion Evolve site includes answers to the Test Yourself questions in the textbook and crossword puzzles. NEW! Overview at a Glance sections outline the main proficiencies of each chapter and include a list of all exercises in the chapter.

labeling a sheep heart: **"Code of Massachusetts regulations, 1994"** , 1994 Archival snapshot of entire looseleaf Code of Massachusetts Regulations held by the Social Law Library of Massachusetts as of January 2020.

labeling a sheep heart: *Exploring Anatomy & Physiology in the Laboratory* Erin C. Amerman, 2017-02-01 Over two previous editions, Exploring Anatomy & Physiology in the Laboratory (EAPL) has become one of the best-selling A&P lab manuals on the market. Its unique, straightforward, practical, activity-based approach to the study of anatomy and physiology in the laboratory has proven to be an effective approach for students nationwide. This comprehensive, beautifully illustrated, and affordably priced manual is appropriate for a two-semester anatomy and physiology laboratory course. Through focused activities and by eliminating redundant exposition and artwork found in most primary textbooks, this manual complements the lecture material and serves as an efficient and effective tool for learning in the lab.

labeling a sheep heart: **Cumulated Index Medicus** , 1970

labeling a sheep heart: **"Code of Massachusetts regulations, 1998"** , 1998 Archival snapshot of entire looseleaf Code of Massachusetts Regulations held by the Social Law Library of Massachusetts as of January 2020.

labeling a sheep heart: *Adrenergic Receptor Protocols* Curtis A. Machida, 2008-02-03 Adrenergic receptors are important modulators in the sympathetic control of various metabolic processes in the central and peripheral nervous systems. These receptors are localized at multiple sites throughout the central nervous system (CNS) and serve as important regulators of

CNS-mediated behavior and neural functions, including mood, memory, neuroendocrine control, and stimulation of autonomic function. *Adrenergic Receptor Protocols* consists of 35 chapters dealing with various aspects of adrenergic receptor analyses, including the use of genetic, RNA, protein expression, transactivator, second messenger, immunocytochemical, electrophysiological, transgenic, and in situ hybridization approaches. This volume details the use of various methods to examine the adrenergic receptor system, using aspects of the genetic flow of information as a guide (DNA? RNA? transactivator? protein expression? second messenger analyses? cellular analyses? transgenic whole animal approaches). *Adrenergic Receptor Protocols* displays step-by-step methods for successful replication of experimental procedures, and would be useful for both experienced investigators and newcomers in the field, including those beginning graduate study or undergoing postdoctoral training. The Notes section contained in each chapter provides valuable troubleshooting guides to help develop working protocols for your laboratory. With *Adrenergic Receptor Protocols*, it has been my intent to develop a comprehensive collection of modern molecular methods for analyzing adrenergic receptors. I would like to thank the many chapter authors for their contributions.

labeling a sheep heart: Clinical Biochemistry of Domestic Animals Jiro J. Kaneko, 1989
 Concepts of normality in clinical biochemistry. Introduction to recombinant DNA technology. Carbohydrate metabolism and its diseases. Ketogenesis and ketosis. Lipid metabolism and its diseases. Serum proteins and the dysproteinemias. Clinical immunology. Erythrocyte metabolism. Porphyrins and the porphyrias. Iron metabolism and its diseases. Hemostasis. Leukocyte function. Clinical enzymology. Liver function. Pancreatic function. Gastrointestinal function. Skeletal muscle function. Kidney function. Fluid, electrolyte, and acid-base balance. Pituitary function. Adrenocortical function. Thyroid function. Clinical reproductive endocrinology. Calcium-regulating hormones and diseases of abnormal mineral (calcium, phosphorus, magnesium) metabolism. Trace elements. The vitamins. Cerebrospinal fluid. Clinical biochemistry of laboratory rodents and rabbits.

labeling a sheep heart: Bibliography of Agriculture, 1972

labeling a sheep heart: *Selected Topics from Neurochemistry* Neville N. Osborne, 2013-10-22
 This book contains up-dated versions of articles which proved very popular when first published in *Neurochemistry International*. The articles draw attention to developments in a specific field perhaps unfamiliar to the reader, collating observations from a wide area which seem to point in a new direction, giving the author's personal view on a controversial topic, or directing soundly based criticism at some widely held dogma or widely used technique in the neurosciences.

labeling a sheep heart: Country-of-origin Labeling United States. Congress. House. Committee on Agriculture. Subcommittee on Livestock and Horticulture, 1999

labeling a sheep heart: *Meat and Poultry Inspection Manual* United States. Animal and Plant Health Inspection Service, 1973

labeling a sheep heart: Clinical Biochemistry of Domestic Animals Jiro Jerry Kaneko, John W. Harvey, Michael L. Bruss, 2008-09-04
 The 6th edition of a well-known and much used standard text in the field. This book covers all aspects of the biochemical abnormalities caused by various diseases and how they relate to the biochemical changes in the blood, urine, cerebrospinal fluid, joint fluids, other body fluids and in cells. The purpose is to provide the fundamental bases for understanding the biochemical changes that occur in disease processes and in turn to provide the rationale for applying this understanding to the diagnosis of the disease process. A substantial appendix is provided so that the user can quickly identify the reference ranges for a large number of animal species.* An appendix is provided in the book so that the user can quickly identify the reference ranges for a large number of animal species* Explains what biochemical changes occur in disease processes and provides the rationale for applying this understanding to the diagnosis of the disease process

labeling a sheep heart: Biochemistry Abstracts, 1980-07

labeling a sheep heart: Consumer Education Service, 1939

labeling a sheep heart: Bibliography of Agriculture, 1984

labeling a sheep heart: *Bibliography of Agriculture with Subject Index* , 1980

labeling a sheep heart: The High-Risk Fetus Chin-Chu Lin, Marion Verp, Rudy E. Sabbagha, 2012-12-06 Here is a practical, comprehensive text on fetal diagnosis, management and therapy which differs from competing texts in maternal-fetal medicine by focusing on the fetus rather than the pregnant woman. All new technologies in the field, from ultrasound diagnosis to intrauterine treatment, are placed in perspective for the practicing physician.

labeling a sheep heart: *Berichte über die wissenschaftliche Biologie* , 1979

labeling a sheep heart: Wool Products Labeling Act of 1939 United States. U.S. Congress. Senate. Committee on interstate commerce, 1939

labeling a sheep heart: **Research Awards Index** , 1987

labeling a sheep heart: **Essential Cytometry Methods** Zbigniew Darzynkiewicz, J. Paul Robinson, Mario Roederer, 2009-10-06 Cytometry is characterization and measurement of cells and cellular constituents, most often used to immunophenotype cells - that is, to distinguish healthy cells from diseased cells. Flow Cytometry specifically is quite sensitive, allowing researchers to detect rare cell types and residual levels of disease, and as such has been the method of choice for important studies such as monitoring the blood of AIDS patients. For this reason, there is a great need for a practical, comprehensive manual that will be useful across a broad range of laboratories. This volume, as part of the Reliable Lab Solution Series, delivers such a tool, offering busy researchers across many disciplines a handy resource of all the best methods and protocols for Cytometry to use at the bench. - Highlights top downloaded and cited chapters, authored by pioneers in the field and enhanced with their tips, and pitfalls to avoid - Loaded with detailed protocols developed and used by leaders in the field - Refines, organizes and updates popular methods from one of our top selling series, *Methods in Cell Biology*

labeling a sheep heart: "*Code of Massachusetts regulations, 2013*" , 2013 Archival snapshot of entire looseleaf Code of Massachusetts Regulations held by the Social Law Library of Massachusetts as of January 2020.

labeling a sheep heart: **Meat and Poultry Inspection Manual** United States. Meat and Poultry Inspection Program, 1973

labeling a sheep heart: "*Code of Massachusetts regulations, 1996*" , 1996 Archival snapshot of entire looseleaf Code of Massachusetts Regulations held by the Social Law Library of Massachusetts as of January 2020.

labeling a sheep heart: "*Code of Massachusetts regulations, 2008*" , 2008 Archival snapshot of entire looseleaf Code of Massachusetts Regulations held by the Social Law Library of Massachusetts as of January 2020.

Labeling or Labelling? - WordReference Forums

Mar 5, 2008 · Hi, Which is the correct spelling for labeling/labelling? I am trying to say "Labelling laws" (normas de etiquetado) I am confused because I have seen it in both ways but don't ...

Middle name vs two first names - WordReference Forums

Nov 22, 2013 · Hello. I have read carefully the threads on "middle name" ; however one of them is closed, and I still have a doubt: In The US many people have two first names (Joana Louise, ...

run small/fit smaller to size - WordReference Forums

Jun 17, 2016 · Hi, there What's the difference between saying a piece of clothing "runs small" and "fits smaller to size"? Thank you

Labelled vs. labeled - WordReference Forums

Jan 27, 2009 · I thought this thread was settled five years ago, but: As I found myself doing when I worked for a short stretch in the UK, ex-pats often pick up European usage. label /'leɪbl/ verb ...

label and labeling - WordReference Forums

May 15, 2010 · The "labeling" is more general: It is whatever comes with the product and gives information about the product. If you sell an article of clothing, for instance, the label would be ...

To whom it may concern (use on envelopes?) - WordReference ...

Jul 26, 2021 · There hardly seems to be any need to put anything on the envelope, if there is an envelope, since any physical letter addressed to "To whom it may concern" is usually handed ...

if you take the side path to the right... | WordReference Forums

Feb 12, 2022 · Dear all, I am confused in labeling the following map, and the question that I've got is No. 18. Why should I choose H, instead of G? The script is written like this: As you may ...

To white label - WordReference Forums

Feb 27, 2014 · Buen día, Conozco el término "white label" (Etiqueta blanca), pero no estoy segura sobre cómo usarlo como verbo en la siguiente frase: Specify the key for white labeling your ...

Key word vs keyword - WordReference Forums

Oct 26, 2015 · In s1, they're words that are key/important. In s2, they're search-related keywords." Identifying some words out of a bigger text as being extremely important or relevant for ...

coffee would be cold by the time it reached - WordReference ...

Oct 18, 2019 · We native English-speakers who learn the language in the United States don't customarily discuss things like "type 1" or "type 2" conditionals in our English classes, but that ...

Labeling or Labelling? - WordReference Forums

Mar 5, 2008 · Hi, Which is the correct spelling for labeling/labelling? I am trying to say "Labelling laws" (normas de etiquetado) I am confused because I have seen it in both ways but don't know which is the correct one: one or two L ? Thanks!

Middle name vs two first names - WordReference Forums

Nov 22, 2013 · Hello. I have read carefully the threads on "middle name" ; however one of them is closed, and I still have a doubt: In The US many people have two first names (Joana Louise, Norma Jean) Others have a middle name, that may come from an originally surname (John. Fitzgerald Kennedy, Lyndon...

run small/fit smaller to size - WordReference Forums

Jun 17, 2016 · Hi, there What's the difference between saying a piece of clothing "runs small" and "fits smaller to size"? Thank you

Labelled vs. labeled - WordReference Forums

Jan 27, 2009 · I thought this thread was settled five years ago, but: As I found myself doing when I worked for a short stretch in the UK, ex-pats often pick up European usage. label /'leɪbl/ verb (labels, labelling, labelled; US labels, labeling, labeled) 1 attach a label to. 2 assign to a category, especially inaccurately. 3 Biology & Chemistry make (a substance, cell, etc.) identifiable using ...

label and labeling - WordReference Forums

May 15, 2010 · The "labeling" is more general: It is whatever comes with the product and gives information about the product. If you sell an article of clothing, for instance, the label would be the tag with the manufacturer's logo that tells you what it is, what size it is, and what it is made of.

To whom it may concern (use on envelopes?) - WordReference ...

Jul 26, 2021 · There hardly seems to be any need to put anything on the envelope, if there is an envelope, since any physical letter addressed to "To whom it may concern" is usually handed to the recipient in person. Alternatively, if it is not, the bearer might place the document in an envelope and address it in the usual way to the recipient. There is no point writing "To whom it ...

if you take the side path to the right... | WordReference Forums

Feb 12, 2022 · Dear all, I am confused in labeling the following map, and the question that I've got is No. 18. Why should I choose H, instead of G? The script is written like this: As you may know, we run skills workshops here, where you can learn traditional crafts like woodwork and basket-making. You can...

To white label - WordReference Forums

Feb 27, 2014 · Buen día, Conozco el término "white label" (Etiqueta blanca), pero no estoy segura sobre cómo usarlo como verbo en la siguiente frase: Specify the key for white labeling your posts made from the platform. Etiquetar en blanco no me gusta mucho. Muchas gracias,

Key word vs keyword - WordReference Forums

Oct 26, 2015 · In s1, they're words that are key/important. In s2, they're search-related keywords." Identifying some words out of a bigger text as being extremely important or relevant for understanding is a subjective judgement and an action of "labeling" somewhat similar to identifying the actual topic (s).

coffee would be cold by the time it reached - WordReference ...

Oct 18, 2019 · We native English-speakers who learn the language in the United States don't customarily discuss things like "type 1" or "type 2" conditionals in our English classes, but that system of labeling conditionals seems to be widely used among people who teach or learn English as a second language. Cross-posted with grassy.

[Back to Home](#)