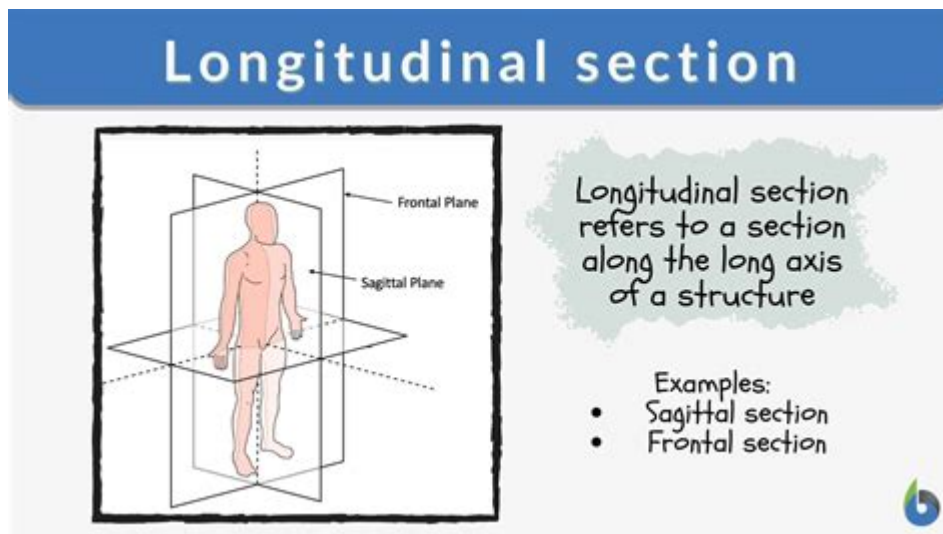


Longitudinal Section In Anatomy



Longitudinal Section in Anatomy: A Comprehensive Guide

Understanding the human body's intricate structures requires precise methods of visualization. One crucial technique used in anatomy, histology, and even medical imaging is the creation of a longitudinal section. This comprehensive guide will delve into the meaning, application, and importance of longitudinal sections in anatomy, providing you with a clear understanding of this fundamental concept. We'll explore its differences from other sectional planes and its practical uses across various fields of study.

What is a Longitudinal Section in Anatomy?

A longitudinal section, in the context of anatomy, refers to a cut made along the long axis of a structure. Imagine slicing a banana lengthwise – that's a longitudinal section. This type of section provides a view of the structure's length, revealing its internal organization and the arrangement of its components from end to end. It's crucial to understand that the "long axis" isn't necessarily a perfectly straight line; it follows the predominant direction of the structure's growth or orientation. For example, a longitudinal section of a bone would follow its length, even if the bone is curved.

Examples of Longitudinal Sections:

To solidify your understanding, consider these examples:

Muscle: A longitudinal section of a muscle reveals the arrangement of muscle fibers, showing how they run parallel to each other, contributing to the muscle's contractile function.

Organ: A longitudinal section of an organ like the heart would display the chambers, valves, and major blood vessels, providing insight into its internal structure and blood flow.

Plant Stem: In botany, a longitudinal section of a plant stem would showcase the arrangement of vascular bundles, pith, and cortex, offering a clear view of its internal structure and transport systems.

Longitudinal Section vs. Other Sectional Planes

It's essential to differentiate a longitudinal section from other sectional planes commonly used in anatomy:

1. Transverse Section (Cross-Section):

This section is perpendicular to the long axis, creating a slice across the structure. Think of slicing a hot dog into circular pieces – each slice is a transverse section. It shows the structure's internal organization at a specific point along its length.

2. Oblique Section:

An oblique section is made at an angle that is neither longitudinal nor transverse. It offers a view that combines aspects of both longitudinal and transverse sections but lacks the clear, complete picture offered by either.

3. Coronal Section (Frontal Section):

This section divides the body or organ into anterior (front) and posterior (back) portions. It is particularly useful for visualizing the relationship between structures in the front and back of the body.

4. Sagittal Section:

A sagittal section divides the body or organ into left and right portions. A midsagittal section divides

it exactly into equal halves.

The Importance of Longitudinal Sections in Anatomy

The use of longitudinal sections is paramount in various anatomical studies for several reasons:

1. Understanding Structure-Function Relationships:

Longitudinal sections help visualize the relationship between a structure's form and its function. By observing the arrangement of tissues and components along the long axis, we can better understand how the structure performs its specific role.

2. Diagnostic Purposes:

In medical imaging, techniques like ultrasound and MRI can produce images that resemble longitudinal sections, allowing doctors to diagnose conditions affecting the length of organs or structures. For example, a longitudinal section of the spinal cord can reveal spinal cord injuries.

3. Research and Education:

Longitudinal sections are crucial in anatomical research and education. Microscopic examination of longitudinal sections of tissues allows for detailed study of cellular organization and tissue architecture.

Applications Across Different Disciplines

The application of longitudinal sections extends beyond human anatomy:

Veterinary Anatomy: Understanding the structure of animal organs and tissues relies heavily on longitudinal sections for diagnosis and research.

Plant Anatomy (Botany): Studying plant structures, such as roots, stems, and leaves, relies heavily on longitudinal sections to understand their growth and function.

Paleontology: Studying fossilized remains often involves creating longitudinal sections to reveal the internal structures of ancient organisms.

Conclusion

The creation and analysis of longitudinal sections are indispensable tools in understanding the structure and function of biological organisms. Whether in human anatomy, veterinary science, botany, or paleontology, the longitudinal perspective provides invaluable insights into the complex organization of living things. The ability to visualize structures along their long axis is fundamental to advancing knowledge and improving diagnostic capabilities in numerous fields.

Frequently Asked Questions (FAQs)

1. What is the difference between a longitudinal and a sagittal section? A longitudinal section follows the long axis of a structure, while a sagittal section divides the body or structure into left and right parts. A longitudinal section can be sagittal, but not all sagittal sections are longitudinal.
2. Can a longitudinal section be used for microscopic examination? Yes, longitudinal sections are frequently prepared for microscopic examination of tissues and cells to study their arrangement and relationships.
3. How are longitudinal sections created? Longitudinal sections are created by cutting a specimen along its long axis using a sharp instrument, such as a scalpel or microtome (for microscopic sections). In medical imaging, specialized techniques create virtual longitudinal sections.
4. What are the limitations of using longitudinal sections? While valuable, longitudinal sections only show one plane of the structure. A complete understanding requires analyzing the structure from multiple planes (transverse, coronal, etc.).
5. Are longitudinal sections always straight? No, the long axis of a structure can be curved, and a longitudinal section would follow this curve to reveal the structure's complete length.

longitudinal section in anatomy: *Anatomy & Physiology* Lindsay Biga, Devon Quick, Sierra Dawson, Amy Harwell, Robin Hopkins, Joel Kaufmann, Mike LeMaster, Philip Matern, Katie Morrison-Graham, Jon Runyeon, 2019-09-26 A version of the OpenStax text

longitudinal section in anatomy: *Anatomy and Physiology* J. Gordon Betts, Peter DeSaix, Jody E. Johnson, Oksana Korol, Dean H. Kruse, Brandon Poe, James A. Wise, Mark Womble, Kelly A. Young, 2013-04-25

longitudinal section in anatomy: *X-kit Anatomy*, 2006

longitudinal section in anatomy: *The Comparative Anatomy, Histology, and Development of the Pituitary Body* Sir Gavin De Beer, 1926

longitudinal section in anatomy: *Surgical Anatomy* John A. C. Macewen, 1910

longitudinal section in anatomy: *Teaching Plant Anatomy Through Creative Laboratory Exercises* R. Larry Peterson, Carol A. Peterson, Lewis H. Melville, 2008 This easy-to-follow, full-colour guide was created for instructors teaching plant structure at the high school, college, and university levels. It benefits from the experience of the authors, who in teaching plant anatomy over many years, came to realize that students learn best by preparing their own microscope slides from

fresh plant samples. The exercises contained in this book have been tested, require minimal supplies and equipment, and use plants that are readily available. Detailed instructions are given for sectioning and staining of plant material. The book contains a glossary of terms, an index, and a list of suppliers of materials required. A CD-ROM of all the illustrations is included for easy downloading into PowerPoint presentations. Although a number of new plant anatomy texts have been published in recent years, none is as innovative, exciting and user-friendly as *Teaching Plant Anatomy Through Creative Laboratory Exercises* by Peterson, Peterson and Melville. What makes this book so usable from high school biology courses on through to upper level university plant structure labs is the wealth of experience that the authors have incorporated into this comprehensive clearly illustrated text. Using mostly photomicrographs of hand sections and wonderfully clear colour illustrations, they cover all aspects of plant structure from organelles to organs. The book also outlines some easy to use techniques, such as hand sections and clearings and macerations, which will certainly be very useful for any plant related lab. This book really does bring plant anatomy to life and will be a must for any course that deals with plant structure even if it's just to prepare plant material for molecular techniques. An excellent contribution to any botanical teaching where you want your students to get a hands-on approach to the subject.... Dr. Usher Posluszny, University of Guelph

longitudinal section in anatomy: Color Atlas and Textbook of Human Anatomy Werner Kahle, Michael Frotscher, 2002 Emphasizing clinical anatomy, the text integrates current information from an array of medical disciplines into the discussions of the nervous system and sensory organs, including in-depth coverage of key topics, including molecular signaling, the interplay between ion channels and transmitters, imaging techniques such as PET, CT, and NMR, and much more.

longitudinal section in anatomy: A System of Human Anatomy, Including Its Medical and Surgical Relations Harrison Allen, 1882

longitudinal section in anatomy: The American Journal of Anatomy , 1917 Volumes 1-5 include Proceedings of the Association of American anatomists (later American Association of Anatomists), 15th-20th session (Dec. 1901/Jan. 1902-Dec. 1905).

longitudinal section in anatomy: *Color Atlas of Anatomy* Johannes Wilhelm Rohen, Chihiro Yokochi, Elke Lütjen-Drecoll, 2006 This atlas includes full-color photographs of actual cadaver dissections instead of idealized illustrations, to accurately and realistically represent anatomical structures. Often used by students as an alternative or supplement to their lab experience, and as an introduction to exactly what they should see before they dissect, as well as a study aid before practical/identification exams.

longitudinal section in anatomy: Inanimate Life George M. Briggs, 2021-07-16

longitudinal section in anatomy: *Laboratory Manual for Anatomy and Physiology* Connie Allen, Valerie Harper, 2011-01-05 The Laboratory Manual for Anatomy and Physiology by Allen and Harper presents material in a clear and concise way. It is very interactive and contains activities and experiments that enhance readers' ability to both visualize anatomical structures and understand physiological topics. Lab exercises are designed to require readers to first apply information they learned and then to critically evaluate it. All lab exercises promote group learning and the variety offers learning experiences for all types of learners (visual, kinesthetic, and auditory). Additionally, the design of the lab exercises makes them easily adaptable for distance learning courses.

longitudinal section in anatomy: *Textbook of Radiographic Positioning & Related Anatomy - Pageburst E-Book on VitalSource* Kenneth L Bontrager, John Lampignano, 2013-02-08 Lists and definitions of the most common pathologies likely to be encountered during specific procedures helps you understand the whole patient and produce radiographs that will make diagnosis easier for the physician. Labeled radiographs identify key radiographic anatomy and landmarks to help you determine if you have captured the correct diagnostic information on your images. Evaluation Criteria for each projection provide standards for evaluating the quality of each radiograph and help you produce the highest quality images. Clinical Indications sections explain why a projection is needed or what pathology is demonstrated to give you a better understanding of

the reasoning behind each projection. Increased emphasis on digital radiography keeps you up to date with the most recent advances in technology. Completely updated content offers expanded coverage of important concepts such as, digital imaging systems, updated CT information and AART exam requirements. More CT procedures with related sectional images, especially for areas such as skull and facial bones, reflect the shift in the field from conventional radiography to CT. Updated art visually demonstrates the latest concepts and procedures with approximately 500 new positioning photos and 150 updated radiographic images. Additional critique images provide valuable experience analyzing images to prepare you to evaluate your own images in the practice environment. Updated Technique and Dose boxes reflect the higher kV now recommended for computed and digital radiography. Imaging Wisely program information from ASRT provides protocols to minimize radiation exposure during digital procedures. The latest standards for computed radiography and digital radiography (CR/DR) from the American Association of Physicists in Medicine ensures you are current with today's procedures and modalities.

longitudinal section in anatomy: Esau's Plant Anatomy Ray F. Evert, 2006-08-28 This revision of the now classic Plant Anatomy offers a completely updated review of the structure, function, and development of meristems, cells, and tissues of the plant body. The text follows a logical structure-based organization. Beginning with a general overview, chapters then cover the protoplast, cell wall, and meristems, through to phloem, periderm, and secretory structures. There are few more iconic texts in botany than Esau's Plant Anatomy... this 3rd edition is a very worthy successor to previous editions... ANNALS OF BOTANY, June 2007

longitudinal section in anatomy: A System of Human Anatomy: Histology, by E. O. Shakespeare Harrison Allen, 1884

longitudinal section in anatomy: Clinically Oriented Anatomy Keith L. Moore, Arthur F. Dalley, A. M. R. Agur, 2013-02-13 Clinically Oriented Anatomy provides first-year medical students with the clinically oriented anatomical information as it relates to the practice of medicine, dentistry, and physical therapy. The 7th edition features a fully revised art program to ensure consistency and cohesiveness of imaging style--Provided by publisher.

longitudinal section in anatomy: Essentials of Anatomy and Physiology Valerie C. Scanlon, Tina Sanders, 2018-10-24 Tried and true - build A&P confidence every step of the way! Here's the approach that makes A&P easier to master. A student-friendly writing style, superb art program, and learning opportunities in every chapter build a firm foundation in this must-know subject to ensure success. See what students are saying online... Great book! "This is THE best Anatomy & Physiology book I've ever used. Clear and easy to understand. Some of the areas of physiology I've had problems with in the past were made clear this term with this book! I had to have it for class of course, but I'd also read it for fun. (I plan to keep the book instead of sell it)"—A. Francis Good. "This was a great text for my Anatomy and Physiology class. It was easy to understand and I got a great grade."—Alisa M. Also Available Student Workbook for Essentials of Anatomy and Physiology, 8th Edition

longitudinal section in anatomy: Textbook of Radiographic Positioning and Related Anatomy - E-Book Kenneth L. Bontrager, John Lampignano, 2013-08-07 Focusing on one projection per page, Textbook of Radiographic Positioning and Related Anatomy, 8th Edition includes all of the positioning and projection information you need to know in a clear, bulleted format. Positioning photos, radiographs, and anatomical images, along with projection and positioning information, help you visualize anatomy and produce the most accurate images. With over 200 of the most commonly requested projections, this text includes all of the essential information for clinical practice. Lists and definitions of the most common pathologies likely to be encountered during specific procedures helps you understand the whole patient and produce radiographs that will make diagnosis easier for the physician. Labeled radiographs identify key radiographic anatomy and landmarks to help you determine if you have captured the correct diagnostic information on your images. Evaluation Criteria for each projection provide standards for evaluating the quality of each radiograph and help you produce the highest quality images. Clinical Indications sections explain why a projection is

needed or what pathology is demonstrated to give you a better understanding of the reasoning behind each projection. Increased emphasis on digital radiography keeps you up to date with the most recent advances in technology. Completely updated content offers expanded coverage of important concepts such as, digital imaging systems, updated CT information and AART exam requirements. More CT procedures with related sectional images, especially for areas such as skull and facial bones, reflect the shift in the field from conventional radiography to CT. Updated art visually demonstrates the latest concepts and procedures with approximately 500 new positioning photos and 150 updated radiographic images. Additional critique images provide valuable experience analyzing images to prepare you to evaluate your own images in the practice environment. Updated Technique and Dose boxes reflect the higher kV now recommended for computed and digital radiography. Imaging Wisely program information from ASRT provides protocols to minimize radiation exposure during digital procedures. The latest standards for computed radiography and digital radiography (CR/DR) from the American Association of Physicists in Medicine ensures you are current with today's procedures and modalities.

longitudinal section in anatomy: The Journal of Anatomy and Physiology, Normal and Pathological, Human and Comparative , 1897

longitudinal section in anatomy: **Morris's human anatomy** Sir Henry Morris, 1921

longitudinal section in anatomy: Morris' Human Anatomy Sir Henry Morris, 1925

longitudinal section in anatomy: Obstetric & Gynaecological Ultrasound Trish Chudleigh, Alison Smith, Sonia Cumming, 2016-07-25 This established text covers the full range of obstetric ultrasound examinations that a sonographer would be expected to perform in a general hospital or secondary referral setting, and is the only text that combines the practicalities of learning how to perform these examinations with the information needed to carry them out in a clinical setting. It encourages students to think about their practice and provides the sonographer with the necessary tools to provide a 'gold standard' service. - Explains the principles of grey scale ultrasound, Doppler ultrasound and instrumentation - Addresses problems from both practical and clinical viewpoints - Provides comparative images showing results of good and bad scanning techniques - Advises on how to communicate findings to a pregnant woman or gynaecological patient - Discusses both the normal and abnormal ultrasound appearances for each of the relevant anatomical areas together - Scope fully expanded to cover gynaecological ultrasound imaging including: - the physiological changes taking place during the menstrual cycle - the effects of exogenous hormones on the various ultrasound appearances during the menstrual cycle - the ultrasound appearances of common abnormalities of the uterus, ovaries and adnexae - the ultrasound assessment of an adnexal mass using a standardized approach - New images to reflect the improvements in imaging technology - New chapter on screening for Down's syndrome and Edwards' and Patau's syndromes in accordance with current national screening recommendations - New chapter on the medico-legal issues relevant to performing and reporting ultrasound examinations

longitudinal section in anatomy: **Studies in Anatomy** Owens College, Manchester, England. Anatomical Department, 1906

longitudinal section in anatomy: **Journal of Anatomy and Physiology** , 1878

longitudinal section in anatomy: Journal of Anatomy , 1877

longitudinal section in anatomy: On the Anatomy of the Roots of Phoenix Paludosa Roxb Andrew Thomas Gage, 1901

longitudinal section in anatomy: **The Journal of Anatomy and Physiology** , 1869

longitudinal section in anatomy: A Laboratory Manual for Comparative Vertebrate Anatomy Libbie Henrietta Hyman, 1922

longitudinal section in anatomy: **Moore's Clinically Oriented Anatomy** Arthur F. Dalley II, Anne M. R. Agur, 2023-04-01 Renowned for its comprehensive coverage and engaging, storytelling approach, the bestselling Moore's Clinically Oriented Anatomy, 9th Edition, guides students from initial anatomy and foundational science courses through clinical training and practice. A popular resource for a variety of programs, this proven text serves as a complete reference, emphasizing

anatomy that is important in physical diagnosis for primary care, interpretation of diagnostic imaging, and understanding the anatomical basis of emergency medicine and general surgery. The 9th Edition reflects the latest changes in the clinical application of anatomy as well as preparation for the USMLE while maintaining the highest standards for scientific and clinical accuracy. NEW! Sex and gender content clarifies important gender considerations and reflects an equitable focus on female as well as male anatomy. Updated medical imaging and integrated surface anatomy within each chapter clearly demonstrates the relationship between anatomy, physical examination, and diagnosis. Extensively revised Clinical Blue Boxes highlight the practical applications of anatomy, accompanied by helpful icons, illustrations, and images that distinguish the type of clinical information covered. Updated introduction establishes the foundational understanding of systemic information and basic concepts essential to success from the classroom to the dissection lab. Revised comprehensive surface anatomy photographs ensure accurate, effective physical examination diagnoses with integrated natural views of unobstructed surface anatomy and illustrations superimposing anatomical structures with landmarks for more accurate physical examination. Insightfully rendered, anatomically accurate illustrations, combined with many photographs and medical images, strengthen comprehension of anatomical concepts and retention of “mental images” of anatomical structures. Bottom Line boxes provide detailed summaries at a glance and underscore the “big-picture” perspective. Illustrated tables clarify complex information about muscles, veins, arteries, nerves, and other structures for easy study and review. Chapter outlines help students find key information quickly and efficiently.

longitudinal section in anatomy: University Botany II : (Gymnosperms, Plant Anatomy, Genetics, Ecology) S M Reddy, S J Chary, 2003 This Book Is Written Strictly In Accordance With The Revised Common Core Syllabus Recommended By Andhra Pradesh State Council Of Higher Education. It Also Caters The Needs Of Undergraduate Students Of Other Indian Universities. This Book Covers Gymnosperms, Plant Anatomy, Genetics And Ecology. Recent Developments In The Subject Matter Have Been Incorporated In The Book. The Book Has A Systematic Presentation. Important Questions And Their Solutions Are Given At The End Of Each Chapter. Every Care Has Been Taken To Present The Subject In A Simple And Lucid Language. The Book Is Profusely Illustrated. This Book Is Written Strictly In Accordance With The Revised Common Core Syllabus Recommended By Andhra Pradesh State Council Of Higher Education. It Also Caters The Needs Of Undergraduate Students Of Other Indian Universities. This Book Covers Gymnosperms, Plant Anatomy, Genetics And Ecology. Recent Developments In The Subject Matter Have Been Incorporated In The Book. The Book Has A Systematic Presentation. Important Questions And Their Solutions Are Given At The End Of Each Chapter. Every Care Has Been Taken To Present The Subject In A Simple And Lucid Language. The Book Is Profusely Illustrated. This Book Is Written Strictly In Accordance With The Revised Common Core Syllabus Recommended By Andhra Pradesh State Council Of Higher Education. It Also Caters The Needs Of Undergraduate Students Of Other Indian Universities. This Book Covers Gymnosperms, Plant Anatomy, Genetics And Ecology. Recent Developments In The Subject Matter Have Been Incorporated In The Book. The Book Has A Systematic Presentation. Important Questions And Their Solutions Are Given At The End Of Each Chapter. Every Care Has Been Taken To Present The Subject In A Simple And Lucid Language. The Book Is Profusely Illustrated. This Book Is Written Strictly In Accordance With The Revised Common Core Syllabus Recommended By Andhra Pradesh State Council Of Higher Education. It Also Caters The Needs Of Undergraduate Students Of Other Indian Universities. This Book Covers Gymnosperms, Plant Anatomy, Genetics And Ecology. Recent Developments In The Subject Matter Have Been Incorporated In The Book. The Book Has A Systematic Presentation. Important Questions And Their Solutions Are Given At The End Of Each Chapter. Every Care Has Been Taken To Present The Subject In A Simple And Lucid Language. The Book Is Profusely Illustrated.

longitudinal section in anatomy: Studies on Recent Cyclostomatous Bryozoa ... Folke Borg, 1926

longitudinal section in anatomy: Zoologische Beiträge Aus Uppsala Uppsala universitet,

longitudinal section in anatomy: Résultats Des Explorations Zoologiques, Botaniques, Océanographiques Et Géologiques, 1926

longitudinal section in anatomy: 7 Reprints on Comparative Anatomy Henry Nottidge Moseley, 1873

longitudinal section in anatomy: Anatomy of Orofacial Structures Richard W Brand, Donald E Isselhard, 2017-12-08 Anatomy of Orofacial Structures: A Comprehensive Approach, 8th Edition, gives you a clear understanding of oral histology and embryology, dental anatomy, and head and neck anatomy – all in a single resource. With new clinical content, a new chapter on the anatomy of local anesthesia, and an outstanding new full-color art program, this new edition is perfect for anyone studying to be a Dental Assistant or a Dental Hygienist. In addition, it offers the benefits of a combined text and student workbook, with review questions and unit tests, as well as detachable flashcards for on-the-go study – making this one product a complete learning package. - Comprehensive coverage of all areas of dental sciences includes oral histology and embryology, dental anatomy, and head and neck anatomy. - Updated, detailed anatomical illustrations support the material, including labeled line drawings, radiographs, and clinical photographs. - Text/Workbook format includes a perforated workbook section with chapter-by-chapter questions. - Removable flashcards feature an image of a tooth on one side and that tooth's identifying/important information on the other side, providing an easy and effective study tool. - NEW! Chapter on the anatomy of local anesthesia details application techniques. - NEW! Updated clinical content throughout focuses on evidence-based practice. - NEW! Full-color program features modern illustrations, histograms, micrographs, and clinical images. - NEW! Updated test bank with cognitive question leveling and mapping to Certified Dental Assistant (CDA) exam and National Board Dental Hygiene Examination (NBDHE) blueprints.

longitudinal section in anatomy: Anatomy and Physiology E-Book Kevin T. Patton, Gary A. Thibodeau, Andrew Hutton, 2020-02-25 Renowned for its clarity and accessibility of writing style, this popular volume explains the fundamental principles of human anatomy and physiology while exploring the factors that contribute to disease process. Rich with helpful learning features such as Mechanisms of Disease, Health Matters, Diagnostic Study, and Sport and Fitness, this volume has been fully updated to make full reference to European healthcare systems, including drugs, relevant investigations and local treatment protocols. The also book comes with an extensive website facility (which includes a wide array of helpful lecturer resources) and accompanying Brief Atlas of the Human Body and Quick Guide to the Language of Science and Medicine. Anatomy and Physiology, Adapted International Edition, will be ideal for students of nursing and allied health professions, biomedical and paramedical science, operating department practice, complementary therapy and massage therapy, as well as anyone studying BTEC (or equivalent) human biology. - Unique 'Clear View of the Human Body' allows the reader to build up a view of the body layer by layer - Clear, conversational writing style helps demystify the complexities of human biology - Content presented in digestible 'chunks' to aid reading and retention of facts - Consistent unifying themes, such as the 'Big Picture' and 'Cycle of Life' features, help readers understand the interrelation of body systems and how they are influenced by age and development - Accompanying Brief Atlas of the Human Body offers more than 100 full-colour transparencies and supplemental images that cover body parts, organs, cross sections, radiography images, and histology slides - Quick Guide to the Language of Science and Medicine contains medical terminology and scientific terms, along with pronunciations, definitions, and word part breakdowns for terms highlighted in the text - Numerous feature boxes such as Language of Science and Language of Medicine, Mechanisms of Disease, Health Matters, Diagnostic Study, FYI, and Sport and Fitness provide interesting and important side considerations to the main text - More than 1,400 full-colour photographs and spectacular drawings illustrate the most current scientific knowledge and help bring difficult concepts to life - Quick Check Questions within each chapter help reinforce learning by prompting readers to review what they just read - Chapter outlines, chapter objectives and study tips begin each chapter - Outline summaries, review

questions, critical thinking questions, and case studies are included at the end of each chapter - Study Hints found throughout the text give practical advice to students about mnemonics or other helpful means of understanding or recall - Connect IT! features link to additional content online to facilitate wider study - Helpful Glossary and Anatomical Directions - Ideal for students who are new to the subject, or returning to study after a period of absence, and for anyone whose first language is not English

longitudinal section in anatomy: Transactions of the Section on Surgery and Anatomy of the American Medical Association at the ... Annual Meeting American Medical Association. Section on Surgery and Anatomy, 1903

longitudinal section in anatomy: *The Microscope, in Its Special Application to Vegetable Anatomy and Physiology ...* Hermann Schacht, 1853

longitudinal section in anatomy: *Memoirs from the Biological Laboratory ...: Selected morphological monographs. I. The Cubomedusæ, by F.S. Conant. 1898. II. Synapta vivipara, by H.L. Clark. 1898. III. The anatomy, habits and embryology of Yoldia limatula, by G.A. Drew. 1899. IV. Physiology and histology of the Cubomedusae, including Dr. F.S. Conant's notes on the physiology, by E.W. Berger. 1900. V. Ophiura brevispina, by C. Grave. 1900. VI. The anatomy and development of Cassiopea Xamachana, by R.P. Bigelow. 1900* Johns Hopkins University. Biological Laboratory, 1900

longitudinal section in anatomy: Essential Anatomy & Physiology in Maternity Care Linda Wylie, 2005-05-10 Anatomy and physiology presented in a clear and accessible manner for the midwifery student. Well illustrated with numerous line diagrams, ANATOMY & PHYSIOLOGY IN MATERNITY CARE takes a system-approach to the physiological changes that occur throughout the childbearing year. Varied case studies reflecting the latest research findings ensure that theory is firmly rooted in midwifery practice. This is an excellent first textbook for those students needing to understand the anatomy and physiology of pregnancy and childbirth. An introductory text covering anatomy and physiology relevant to midwifery students Simple, accessible language ensures complete understanding of complex theory Case studies relate anatomy and physiology to midwifery practice Covers physiological changes throughout the childbearing year Updated references New case studies reflecting latest research findings

LONGITUDINAL Definition & Meaning - Merriam-Webster

The meaning of LONGITUDINAL is placed or running lengthwise. How to use longitudinal in a sentence.

Longitudinal study - Wikipedia

A longitudinal study (or longitudinal survey, or panel study) is a research design that involves repeated observations of the same ...

LONGITUDINAL Definition & Meaning | Dictionary.com

Longitudinal definition: of or relating to longitude or length.. See examples of LONGITUDINAL used in a sentence.

LONGITUDINAL | English meaning - Cambridge Dictionary

medical, social sciences Longitudinal research is done on people or groups over a long period of time: longitudinal analysis / ...

Longitudinal - definition of longitudinal by The Free Dictionary

1. of or pertaining to longitude or length: longitudinal measurement. 2. extending in the direction of the length of a thing; ...

LONGITUDINAL Definition & Meaning - Merriam-Webster

The meaning of LONGITUDINAL is placed or running lengthwise. How to use longitudinal in a sentence.

Longitudinal study - Wikipedia

A longitudinal study (or longitudinal survey, or panel study) is a research design that involves repeated observations of the same variables (e.g., people) over long periods of time (i.e., uses ...

LONGITUDINAL Definition & Meaning | Dictionary.com

Longitudinal definition: of or relating to longitude or length.. See examples of LONGITUDINAL used in a sentence.

LONGITUDINAL | English meaning - Cambridge Dictionary

medical, social sciences Longitudinal research is done on people or groups over a long period of time: longitudinal analysis / studies (Definition of longitudinal from the Cambridge Advanced ...

Longitudinal - definition of longitudinal by The Free Dictionary

1. of or pertaining to longitude or length: longitudinal measurement. 2. extending in the direction of the length of a thing; lengthwise. 3. of or extending along the long axis of the body, or the ...

longitudinal adjective - Definition, pictures, pronunciation and ...

Definition of longitudinal adjective in Oxford Advanced Learner's Dictionary. Meaning, pronunciation, picture, example sentences, grammar, usage notes, synonyms and more.

Lateral vs. Longitudinal: What's the Key Difference?

Aug 4, 2025 · Understand the core distinction between lateral and longitudinal directions. Learn how these fundamental concepts apply across various fields for clear communication.

longitudinal, adj. & n. meanings, etymology and more | Oxford ...

longitudinal, adj. & n. meanings, etymology, pronunciation and more in the Oxford English Dictionary

LONGITUDINAL definition and meaning | Collins English Dictionary

A longitudinal line or structure goes from one end of an object to the other rather than across it from side to side. That stability lends itself to longitudinal analysis. Collins COBUILD Advanced ...

Longitudinal - Definition, Meaning & Synonyms | Vocabulary.com

Use the adjective longitudinal to describe something that takes place over a long period of time, like a study of the lifetime eating habits of people who live on islands. Sociologists and other ...

[Back to Home](#)