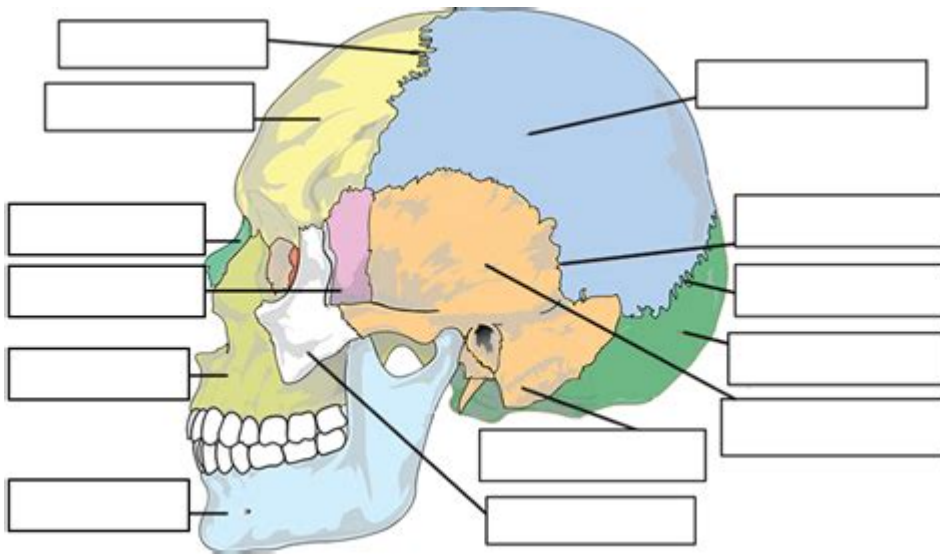


Skull Labeling Worksheet



Unlock the Mysteries of the Skull: Your Ultimate Guide to Skull Labeling Worksheets

Are you a student struggling to memorize the intricate bones of the human skull? Or perhaps a teacher searching for engaging and effective resources to help your students master this complex subject? Look no further! This comprehensive guide dives deep into the world of skull labeling worksheets, providing you with everything you need to understand their value, how to use them effectively, and where to find the best resources. We'll explore different types of worksheets, discuss effective learning strategies, and even offer tips for creating your own personalized skull labeling exercises. Let's unlock the secrets of the cranium together!

Why Use Skull Labeling Worksheets?

Skull labeling worksheets offer a powerful and engaging way to learn the complex anatomy of the human skull. Unlike passively reading textbook descriptions, these worksheets actively involve the learner, promoting better retention and a deeper understanding. They are particularly beneficial for:

Visual Learners: The visual nature of the worksheets allows students to connect names to locations, improving memorization.

Kinesthetic Learners: The act of writing and labeling encourages physical engagement with the material.

Reinforcement of Learning: Worksheets provide a valuable tool for reviewing and solidifying knowledge gained through lectures, textbook readings, or other learning activities.

Self-Assessment: Students can immediately check their understanding and identify areas needing

further study.

Types of Skull Labeling Worksheets

The effectiveness of a skull labeling worksheet depends heavily on its design. Here are some common types you might encounter:

Basic Labeling Worksheets: These worksheets usually present a simple diagram of the skull and a list of bone names to match. They're excellent for beginners.

Advanced Labeling Worksheets: These include more detailed diagrams, potentially showing sutures, foramina, and other intricate structures. They are suitable for more advanced students.

Blanks-only Worksheets: These worksheets only provide a diagram of the skull, requiring students to recall and label all the bones from memory. This is a great way to test comprehension.

Worksheets with Multiple-Choice Questions: These worksheets combine labeling with multiple-choice questions to test understanding of bone functions and relationships.

Interactive Worksheets (Online): Many online resources offer interactive labeling exercises, providing immediate feedback and a more engaging learning experience.

Effective Strategies for Using Skull Labeling Worksheets

To maximize the benefits of skull labeling worksheets, consider these strategies:

Start Simple: Begin with basic worksheets before moving to more complex ones.

Use Multiple Resources: Don't rely on just one worksheet. Utilize various resources to reinforce learning from different angles.

Review Regularly: Consistent review is crucial for long-term retention. Revisit worksheets periodically to solidify knowledge.

Utilize Color-Coding: Assign different colors to different bone groups to improve visual organization and memory.

Study in Groups: Working with peers can facilitate learning and provide opportunities for mutual support and explanation.

Relate to Real-World Applications: Discuss the functions of each bone and how they contribute to the overall structure and protection of the brain.

Where to Find High-Quality Skull Labeling Worksheets

Finding suitable skull labeling worksheets is easier than ever. Here are some places to start your search:

Educational Websites: Many websites offer free and printable worksheets. Search for "skull labeling worksheet PDF" or "human skull anatomy worksheet."

Online Educational Platforms: Sites like Teachers Pay Teachers offer a wide range of printable and digital worksheets, some free and some for purchase.

Textbook Resources: Check if your textbook or accompanying materials include printable worksheets or online resources.

Create Your Own: If you can't find exactly what you need, consider creating your own worksheet using image editing software and a word processor.

Creating Your Own Skull Labeling Worksheet

Creating your own worksheet allows for complete customization. Consider these tips:

Choose a High-Quality Image: Use a clear and detailed anatomical image of the skull.

Label Clearly: Use a legible font and avoid overcrowding the labels.

Provide a Word Bank: Include a word bank with the names of the bones for easier reference, especially for beginners.

Consider Different Difficulty Levels: Create multiple versions of the worksheet catering to different learning levels.

Include an Answer Key: Provide an answer key to allow for self-assessment and immediate feedback.

Conclusion

Skull labeling worksheets are invaluable tools for mastering the complex anatomy of the human skull. By utilizing the strategies and resources outlined in this guide, students and educators can enhance their learning and teaching experiences. Remember to select appropriate worksheets based on learning levels, utilize various learning strategies, and maintain consistent review for optimal results. Mastering the skull's anatomy opens doors to a deeper understanding of human biology and related fields.

FAQs

1. Are there skull labeling worksheets specifically for children? Yes, many resources offer simplified versions suitable for younger learners. These often focus on major bones and use simpler terminology.

2. Can I use skull labeling worksheets for a homeschooling environment? Absolutely! They're a fantastic resource for homeschooling, providing a structured and engaging way to learn anatomy.

3. Are there any interactive online skull labeling worksheets? Yes, several websites and educational platforms offer interactive online worksheets that provide immediate feedback.
4. What if I'm struggling to find a specific bone on the worksheet? Refer to a detailed anatomical diagram or textbook to assist with identification. Comparing your worksheet to a high-quality image can help clarify the location of specific bones.
5. Can I adapt or modify existing skull labeling worksheets? Absolutely! Feel free to modify existing worksheets to better suit your needs or learning style. You can add more detail, simplify elements, or focus on specific regions of the skull.

skull labeling worksheet: Anatomy and Physiology J. Gordon Betts, Peter DeSaix, Jody E. Johnson, Oksana Korol, Dean H. Kruse, Brandon Poe, James A. Wise, Mark Womble, Kelly A. Young, 2013-04-25

skull labeling worksheet: Anatomy & Physiology Lindsay Biga, Devon Quick, Sierra Dawson, Amy Harwell, Robin Hopkins, Joel Kaufmann, Mike LeMaster, Philip Matern, Katie Morrison-Graham, Jon Runyeon, 2019-09-26 A version of the OpenStax text

skull labeling worksheet: Skulls and Bones Glenn Searfoss, 1995 How to identify mammal bones and comprehend what the structures indicate about each animal's lifestyle.

skull labeling worksheet: Animal Skulls Mark Elbroch, 2006 This reference and guidebook offers illustrations, descriptions, and measurements for the skulls of some 275 animal species found throughout North America. The skull is the key anatomical feature used to identify an animal and understand many of its behaviors. This book describes in words and pictures the bones and regions of the skull important to identification, including illustrations of all the bones in the cranium, leading to a greater understanding of a creature's place in the natural world. With life-size drawings, this guide is a reference for wildlife professionals, trackers, and animal-lovers.

skull labeling worksheet: Cambridge Primary Science Stage 4 Activity Book Fiona Baxter, Liz Dille, Alan Cross, 2014-05-22 Cambridge Primary Science is a flexible, engaging course written specifically for the Cambridge Primary Science curriculum framework. This Activity Book for Stage 4 contains exercises to support each topic in the Learner's Book, which may be completed in class or set as homework. Exercises are designed to consolidate understanding, develop application of knowledge in new situations, and develop Scientific Enquiry skills. There is also an exercise to practise the core vocabulary from each unit.

skull labeling worksheet: Discovering the Brain National Academy of Sciences, Institute of Medicine, Sandra Ackerman, 1992-01-01 The brain ... There is no other part of the human anatomy that is so intriguing. How does it develop and function and why does it sometimes, tragically, degenerate? The answers are complex. In *Discovering the Brain*, science writer Sandra Ackerman cuts through the complexity to bring this vital topic to the public. The 1990s were declared the Decade of the Brain by former President Bush, and the neuroscience community responded with a host of new investigations and conferences. *Discovering the Brain* is based on the Institute of Medicine conference, Decade of the Brain: Frontiers in Neuroscience and Brain Research. *Discovering the Brain* is a field guide to the brain—an easy-to-read discussion of the brain's physical structure and where functions such as language and music appreciation lie. Ackerman examines: How electrical and chemical signals are conveyed in the brain. The mechanisms by which we see, hear, think, and pay attention—and how a gut feeling actually originates in the brain. Learning and memory retention, including parallels to computer memory and what they might tell us about our own mental capacity. Development of the brain throughout the life span, with a look at the aging brain. Ackerman provides an enlightening chapter on the connection between the brain's physical condition and various mental disorders and notes what progress can realistically be made toward the prevention and treatment of stroke and other ailments. Finally, she explores the potential for

major advances during the Decade of the Brain, with a look at medical imaging techniques—what various technologies can and cannot tell us—and how the public and private sectors can contribute to continued advances in neuroscience. This highly readable volume will provide the public and policymakers—and many scientists as well—with a helpful guide to understanding the many discoveries that are sure to be announced throughout the Decade of the Brain.

skull labeling worksheet: *Textbook of Head and Neck Anatomy* James L. Hiatt, 2020-03-18
Now in full color, the Fourth Edition of this classic text combines concise yet complete coverage of head and neck anatomy with superb photographs, drawings, and tables to provide students with a thorough understanding of this vital subject. This edition contains basic anatomic information not found in other specialized textbooks of head and neck anatomy. It details structures of the oral cavity from an oral examination point of view to promote the practical application of fundamental anatomic concepts. Other features include Clinical Considerations boxes that highlight the clinical significance of anatomy, a discussion of the anatomic basis of local anesthesia and lymphatic drainage, and an embryological account of head and neck development.

skull labeling worksheet: *Bones and Cartilage* Brian K. Hall, 2014-12-23
Bones and Cartilage provides the most in-depth review and synthesis assembled on the topic, across all vertebrates. It examines the function, development and evolution of bone and cartilage as tissues, organs and skeletal systems. It describes how bone and cartilage develop in embryos and are maintained in adults, how bone is repaired when we break a leg, or regenerates when a newt grows a new limb, or a lizard a new tail. The second edition of *Bones and Cartilage* includes the most recent knowledge of molecular, cellular, developmental and evolutionary processes, which are integrated to outline a unified discipline of developmental and evolutionary skeletal biology. Additionally, coverage includes how the molecular and cellular aspects of bones and cartilage differ in different skeletal systems and across species, along with the latest studies and hypotheses of relationships between skeletal cells and the most recent information on coupling between osteocytes and osteoclasts. All chapters have been revised and updated to include the latest research. - Offers complete coverage of every aspect of bone and cartilage, with updated references and extensive illustrations - Integrates development and evolution of the skeleton, as well a synthesis of differentiation, growth and patterning - Treats all levels from molecular to clinical, embryos to evolution, and covers all vertebrates as well as invertebrate cartilages - Includes new chapters on evolutionary skeletal biology that highlight normal variation and variability, and variation outside the norm (neomorphs, atavisms) - Updates hypotheses on the origination of cartilage using new phylogenetic, cellular and genetic data - Covers stem cells in embryos and adults, including mesenchymal stem cells and their use in genetic engineering of cartilage, and the concept of the stem cell niche

skull labeling worksheet: *Emergency Response Guidebook* U.S. Department of Transportation, 2013-06-03
Does the identification number 60 indicate a toxic substance or a flammable solid, in the molten state at an elevated temperature? Does the identification number 1035 indicate ethane or butane? What is the difference between natural gas transmission pipelines and natural gas distribution pipelines? If you came upon an overturned truck on the highway that was leaking, would you be able to identify if it was hazardous and know what steps to take? Questions like these and more are answered in the *Emergency Response Guidebook*. Learn how to identify symbols for and vehicles carrying toxic, flammable, explosive, radioactive, or otherwise harmful substances and how to respond once an incident involving those substances has been identified. Always be prepared in situations that are unfamiliar and dangerous and know how to rectify them. Keeping this guide around at all times will ensure that, if you were to come upon a transportation situation involving hazardous substances or dangerous goods, you will be able to help keep others and yourself out of danger. With color-coded pages for quick and easy reference, this is the official manual used by first responders in the United States and Canada for transportation incidents involving dangerous goods or hazardous materials.

skull labeling worksheet: *A Key-guide to Mammal Skulls and Lower Jaws* Aryan I. Roest, 1986

These keys will help identify the skulls of most wild and domestic mammals which occur in the United States and southern Canada.--Page 1.

skull labeling worksheet: Marine Mammals Ashore Joseph R. Geraci, Valerie J. Lounsbury, 2005 Comprehensive manual for understanding and carrying out marine mammal rescue activities for stranded seals, manatees, dolphins, whales, or sea otters.

skull labeling worksheet: A Visual Analogy Guide to Human Anatomy & Physiology Paul A. Krieger, 2017-02-01 The Visual Analogy Guides to Human Anatomy & Physiology, 3e is an affordable and effective study aid for students enrolled in an introductory anatomy and physiology sequence of courses. This book uses visual analogies to assist the student in learning the details of human anatomy and physiology. Using these analogies, students can take things they already know from experiences in everyday life and apply them to anatomical structures and physiological concepts with which they are unfamiliar. The study guide offers a variety of learning activities for students such as, labeling diagrams, creating their own drawings, or coloring existing black-and-white illustrations to better understand the material presented.

skull labeling worksheet: Sophie's World Jostein Gaarder, 2007-03-20 A page-turning novel that is also an exploration of the great philosophical concepts of Western thought, Jostein Gaarder's Sophie's World has fired the imagination of readers all over the world, with more than twenty million copies in print. One day fourteen-year-old Sophie Amundsen comes home from school to find in her mailbox two notes, with one question on each: Who are you? and Where does the world come from? From that irresistible beginning, Sophie becomes obsessed with questions that take her far beyond what she knows of her Norwegian village. Through those letters, she enrolls in a kind of correspondence course, covering Socrates to Sartre, with a mysterious philosopher, while receiving letters addressed to another girl. Who is Hilde? And why does her mail keep turning up? To unravel this riddle, Sophie must use the philosophy she is learning—but the truth turns out to be far more complicated than she could have imagined.

skull labeling worksheet: The Necropsy Book John McKain King, L. Roth-Johnson, M. E. Newson, 2007

skull labeling worksheet: The Poison Squad Deborah Blum, 2018-09-25 A New York Times Notable Book The inspiration for PBS's AMERICAN EXPERIENCE film The Poison Squad. From Pulitzer Prize winner and New York Times-bestselling author Deborah Blum, the dramatic true story of how food was made safe in the United States and the heroes, led by the inimitable Dr. Harvey Washington Wiley, who fought for change By the end of nineteenth century, food was dangerous. Lethal, even. Milk might contain formaldehyde, most often used to embalm corpses. Decaying meat was preserved with both salicylic acid, a pharmaceutical chemical, and borax, a compound first identified as a cleaning product. This was not by accident; food manufacturers had rushed to embrace the rise of industrial chemistry, and were knowingly selling harmful products. Unchecked by government regulation, basic safety, or even labelling requirements, they put profit before the health of their customers. By some estimates, in New York City alone, thousands of children were killed by embalmed milk every year. Citizens--activists, journalists, scientists, and women's groups--began agitating for change. But even as protective measures were enacted in Europe, American corporations blocked even modest regulations. Then, in 1883, Dr. Harvey Washington Wiley, a chemistry professor from Purdue University, was named chief chemist of the agriculture department, and the agency began methodically investigating food and drink fraud, even conducting shocking human tests on groups of young men who came to be known as, The Poison Squad. Over the next thirty years, a titanic struggle took place, with the courageous and fascinating Dr. Wiley campaigning indefatigably for food safety and consumer protection. Together with a gallant cast, including the muckraking reporter Upton Sinclair, whose fiction revealed the horrific truth about the Chicago stockyards; Fannie Farmer, then the most famous cookbook author in the country; and Henry J. Heinz, one of the few food producers who actively advocated for pure food, Dr. Wiley changed history. When the landmark 1906 Food and Drug Act was finally passed, it was known across the land, as Dr. Wiley's Law. Blum brings to life this timeless and hugely satisfying David and

Goliath tale with righteous verve and style, driving home the moral imperative of confronting corporate greed and government corruption with a bracing clarity, which speaks resoundingly to the enormous social and political challenges we face today.

skull labeling worksheet: *Clinical Case Studies for the Family Nurse Practitioner* Leslie Neal-Boylan, 2011-11-28 *Clinical Case Studies for the Family Nurse Practitioner* is a key resource for advanced practice nurses and graduate students seeking to test their skills in assessing, diagnosing, and managing cases in family and primary care. Composed of more than 70 cases ranging from common to unique, the book compiles years of experience from experts in the field. It is organized chronologically, presenting cases from neonatal to geriatric care in a standard approach built on the SOAP format. This includes differential diagnosis and a series of critical thinking questions ideal for self-assessment or classroom use.

skull labeling worksheet: *Atlas of the Human Skull* H. Wayne Sampson, John L. Montgomery, Gary L. Henryson, 1991 Photographs of skulls and individual constituent bones illustrate their position and shape, with significant features identified. A supplementary text for courses in medical and dental anatomy and radiology,, but also useful as a reference for practitioners, and even anthropologists. No bibliography. Annotation copyrighted by Book News, Inc., Portland, OR

skull labeling worksheet: *Basic Hairdressing* Catherine Avadis, 2003-06-30 This unique pack has been specially developed to provide you with new ways of teaching NVQ Level 2 and is packed with additional materials to help you deliver the course and make learning fun. It provides complete coverage of all core and optional units and complements the Basic Hairdressing coursebook. Provides a flexible approach to teaching through activities, demonstrations, quizzes and student worksheets. Designed to assist you in the planning and delivery of classes. Interactive worksheets and quick quizzes keep students motivated and help measure the success of each session. Shows how activities link to relevant Key Skills. Contains a FREE easy-to-use CD-ROM with fully editable worksheets, networkable photos from the coursebook and answers to student quizzes.

skull labeling worksheet: Crime Scene Investigation National Institute of Justice (U.S.). Technical Working Group on Crime Scene Investigation, 2000 This is a guide to recommended practices for crime scene investigation. The guide is presented in five major sections, with sub-sections as noted: (1) Arriving at the Scene: Initial Response/Prioritization of Efforts (receipt of information, safety procedures, emergency care, secure and control persons at the scene, boundaries, turn over control of the scene and brief investigator/s in charge, document actions and observations); (2) Preliminary Documentation and Evaluation of the Scene (scene assessment, walk-through and initial documentation); (3) Processing the Scene (team composition, contamination control, documentation and prioritize, collect, preserve, inventory, package, transport, and submit evidence); (4) Completing and Recording the Crime Scene Investigation (establish debriefing team, perform final survey, document the scene); and (5) Crime Scene Equipment (initial responding officers, investigator/evidence technician, evidence collection kits).

skull labeling worksheet: *Illustrated Anatomy of the Head and Neck* Margaret J. Fehrenbach, Susan W. Herring, 2002 Resource added for the Dental Hygienist program 105081 and Dental Assistant program 315081.

skull labeling worksheet: Bad Bug Book Mark Walderhaug, 2014-01-14 The Bad Bug Book 2nd Edition, released in 2012, provides current information about the major known agents that cause foodborne illness. Each chapter in this book is about a pathogen—a bacterium, virus, or parasite—or a natural toxin that can contaminate food and cause illness. The book contains scientific and technical information about the major pathogens that cause these kinds of illnesses. A separate “consumer box” in each chapter provides non-technical information, in everyday language. The boxes describe plainly what can make you sick and, more important, how to prevent it. The information provided in this handbook is abbreviated and general in nature, and is intended for practical use. It is not intended to be a comprehensive scientific or clinical reference. The Bad Bug Book is published by the Center for Food Safety and Applied Nutrition (CFSAN) of the Food and Drug Administration (FDA), U.S. Department of Health and Human Services.

skull labeling worksheet: A Deadly Education Naomi Novik, 2020-09-29 NEW YORK TIMES BESTSELLER • From the author of *Uprooted* and *Spinning Silver* comes the first book of the Scholomance trilogy, the story of an unwilling dark sorceress who is destined to rewrite the rules of magic. FINALIST FOR THE LODESTAR AWARD • “The dark school of magic I’ve been waiting for.”—Katherine Arden, author of the *Winternight Trilogy* I decided that Orion Lake needed to die after the second time he saved my life. Everyone loves Orion Lake. Everyone else, that is. Far as I’m concerned, he can keep his flashy combat magic to himself. I’m not joining his pack of adoring fans. I don’t need help surviving the Scholomance, even if they do. Forget the hordes of monsters and cursed artifacts, I’m probably the most dangerous thing in the place. Just give me a chance and I’ll level mountains and kill untold millions, make myself the dark queen of the world. At least, that’s what the world expects. Most of the other students in here would be delighted if Orion killed me like one more evil thing that’s crawled out of the drains. Sometimes I think they want me to turn into the evil witch they assume I am. The school certainly does. But the Scholomance isn’t getting what it wants from me. And neither is Orion Lake. I may not be anyone’s idea of the shining hero, but I’m going to make it out of this place alive, and I’m not going to slaughter thousands to do it, either. Although I’m giving serious consideration to just one. With flawless mastery, Naomi Novik creates a school bursting with magic like you’ve never seen before, and a heroine for the ages—a character so sharply realized and so richly nuanced that she will live on in hearts and minds for generations to come. The magic of the Scholomance trilogy continues in *The Last Graduate* “The can’t-miss fantasy of fall 2020, a brutal coming-of-power story steeped in the aesthetics of dark academia. . . . A Deadly Education will cement Naomi Novik’s place as one of the greatest and most versatile fantasy writers of our time.”—BookPage (starred review) “A must-read . . . Novik puts a refreshingly dark, adult spin on the magical boarding school. . . . Readers will delight in the push-and-pull of El and Orion’s relationship, the fantastically detailed world, the clever magic system, and the matter-of-fact diversity of the student body.”—Publishers Weekly (starred review)

skull labeling worksheet: NUREG/CR. U.S. Nuclear Regulatory Commission, 1977

skull labeling worksheet: DBT Skills Training Handouts and Worksheets Marsha M. Linehan, 2014-10-28 Featuring more than 225 user-friendly handouts and worksheets, this is an essential resource for clients learning dialectical behavior therapy (DBT) skills, and those who treat them. All of the handouts and worksheets discussed in Marsha M. Linehan's *DBT Skills Training Manual, Second Edition*, are provided, together with brief introductions to each module written expressly for clients. Originally developed to treat borderline personality disorder, DBT has been demonstrated effective in treatment of a wide range of psychological and emotional problems. No single skills training program will include all of the handouts and worksheets in this book; clients get quick, easy access to the tools recommended to meet their particular needs. The 8 1/2 x 11 format and spiral binding facilitate photocopying. Purchasers also get access to a webpage where they can download and print additional copies of the handouts and worksheets. Mental health professionals, see also the author's *DBT Skills Training Manual, Second Edition*, which provides complete instructions for teaching the skills. Also available: *Cognitive-Behavioral Treatment of Borderline Personality Disorder*, the authoritative presentation of DBT, and Linehan's instructive skills training DVDs for clients--*Crisis Survival Skills: Part One* and *This One Moment*.

skull labeling worksheet: Biomechanical Basis of Human Movement Joseph Hamill, Kathleen Knutzen, Timothy R. Derrick, 2015 Focusing on the quantitative nature of biomechanics, this book integrates current literature, meaningful numerical examples, relevant applications, hands-on exercises, and functional anatomy, physics, calculus, and physiology to help students - regardless of their mathematical background - understand the full continuum of human movement potential.

skull labeling worksheet: Mammals of the Southwest E. Lendell Cockrum, 1982

skull labeling worksheet: TIMSS 2011 International Results in Mathematics Ina V. S. Mullis, 2012-12

skull labeling worksheet: The Bad Bug Book FDA, U S Food & Drug Administrati, 2004 The

Bad Bug was created from the materials assembled at the FDA website of the same name. This handbook provides basic facts regarding foodborne pathogenic microorganisms and natural toxins. It brings together in one place information from the Food & Drug Administration, the Centers for Disease Control & Prevention, the USDA Food Safety Inspection Service, and the National Institutes of Health.

skull labeling worksheet: *The Criminal Investigation Process* Peter W. Greenwood, Jan M. Chaiken, Joan Petersilia, 1977

skull labeling worksheet: *Hamlet* William Shakespeare, 2022-03-24

skull labeling worksheet: **Medical-Surgical Nursing** Sharon Mantik Lewis, Margaret McLean Heitkemper, Jean Foret Giddens, Shannon Ruff Dirksen, 2003-12-01 Package includes Medical-Surgical Nursing: Assessment and Management of Clinical Problems Two Volume text and Virtual Clinical Excursions 2.0

skull labeling worksheet: Regarding the Dead Alexandra Fletcher (Museum curator), Daniel Antoine, J. D. Hill, 2014 A key publication on the British Museum's approach to the ethical issues surrounding the inclusion of human remains in museum collections and possible solutions to the dilemmas relating to their curation, storage, access management and display.

skull labeling worksheet: *The Ungrateful Refugee* Dina Nayeri, 2019-05-30 'A vital book for our times' ROBERT MACFARLANE 'Unflinching, complex, provocative' NIKESH SHUKLA 'A work of astonishing, insistent importance' Observer Aged eight, Dina Nayeri fled Iran along with her mother and brother, and lived in the crumbling shell of an Italian hotel-turned-refugee camp. Eventually she was granted asylum in America. Now, Nayeri weaves together her own vivid story with those of other asylum seekers in recent years. In these pages, women gather to prepare the noodles that remind them of home, a closeted queer man tries to make his case truthfully as he seeks asylum and a translator attempts to help new arrivals present their stories to officials. Surprising and provocative, *The Ungrateful Refugee* recalibrates the conversation around the refugee experience. Here are the real human stories of what it is like to be forced to flee your home, and to journey across borders in the hope of starting afresh.

skull labeling worksheet: Skeleton Hiccups Margery Cuyler, 2005-08 For use in schools and libraries only. Skeleton wakes up with the hiccups. He plays with his friend, Ghost, who suggests several ways Skeleton should try to get rid of them. Finally Ghost has an idea--and he scares those hiccups right out of Skeleton.

skull labeling worksheet: **OET Nursing** Cambridge Boxhill Cambridge Boxhill Language Assessment, 2018-08-17 From the makers of OET.Test and build your English skills with this official OET Nursing resource. This Practice Test Book includes:* Three OET practice tests with answer keys* An overview of OET and how the test is scored* The Test-Taker's Information Guide* Key assessment criteria* Useful language information.***Want to buy both print and kindle versions?***Buy the print book from Amazon.com and you will be given the option to purchase the kindle book at a heavily discounted price.

skull labeling worksheet: Archaeology, Anthropology, and Interstellar Communication National Aeronautics Administration, Douglas Vakoch, 2014-09-06 Addressing a field that has been dominated by astronomers, physicists, engineers, and computer scientists, the contributors to this collection raise questions that may have been overlooked by physical scientists about the ease of establishing meaningful communication with an extraterrestrial intelligence. These scholars are grappling with some of the enormous challenges that will face humanity if an information-rich signal emanating from another world is detected. By drawing on issues at the core of contemporary archaeology and anthropology, we can be much better prepared for contact with an extraterrestrial civilization, should that day ever come.

skull labeling worksheet: Toxicological Profile for Pentachlorophenol , 2001

skull labeling worksheet: **Functional Index of Departmental Forms** United States. Department of the Air Force, 1986

skull labeling worksheet: VC-Emerald-TB-05_T1 Sutapa Basu & Archana Sashi Kumar &

Kusum Wadhwa & Anju Loomba & Sharmila Basu & Nalini Hariharan, VC-Emerald-TB-05_T1
skull labeling worksheet: Elementary School Health Instruction Marion B. Pollock,
Kathleen Middleton, 1984

Skull | Definition, Anatomy, & Function | Britannica

Jul 31, 2025 · Skull, skeletal framework of the head of vertebrates, composed of bones or cartilage, which form a unit that protects the brain and some sense organs. The skull includes ...

Skull Emoji | Meaning, Copy And Paste - Emojipedia

A whitish-gray, cartoon-styled human skull with large, black eye sockets. Commonly expresses figurative death, e.g., dying from extreme laughter, frustration, o...

Skull: Anatomy, structure, bones, quizzes | Kenhub

Nov 21, 2023 · The human skull consists of 22 bones. This is your guide to understanding the structure, features, foramina and contents of the human skull.

Skull Emoji: Meaning & Usage

The skull emoji 🦴 looks like a cartoon-style representation of a human skull. It's white or gray with large, hollow eyes and a nasal cavity. It's

The Skull: Names of Bones in the Head, with Anatomy ...

The skull is divided into the neurocranium and the facial skeleton. Names, Anatomy, and Structure of the Bones in the Skull Neurocranium It is the uppermost part of the skull that encircles and ...

Skull Anatomy: Complete Guide with Parts, Names & Diagram

Oct 16, 2024 · Learn a skull anatomy with parts, names & detailed diagram. Complete guide for students to explore structure & function of the human skull.

The Skull | Anatomy and Physiology I - Lumen Learning

The cranium (skull) is the skeletal structure of the head that supports the face and protects the brain. It is subdivided into the facial bones and the brain case, or cranial vault (Figure 1). The ...

Skull | Definition, Anatomy, & Function | Britannica

Jul 31, 2025 · Skull, skeletal framework of the head of vertebrates, composed of bones or cartilage, which form a unit that protects the brain and some sense organs. The skull includes ...

Skull Emoji | Meaning, Copy And Paste - Emojipedia

A whitish-gray, cartoon-styled human skull with large, black eye sockets. Commonly expresses figurative death, e.g., dying from extreme laughter, frustration, o...

Skull: Anatomy, structure, bones, quizzes | Kenhub

Nov 21, 2023 · The human skull consists of 22 bones. This is your guide to understanding the structure, features, foramina and contents of the human skull.

Skull Emoji: Meaning & Usage

The skull emoji 🦴 looks like a cartoon-style representation of a human skull. It's white or gray with large, hollow eyes and a nasal cavity. It's

The Skull: Names of Bones in the Head, with Anatomy ...

The skull is divided into the neurocranium and the facial skeleton. Names, Anatomy, and Structure of the Bones in the Skull Neurocranium It is the uppermost part of the skull that encircles and ...

Skull Anatomy: Complete Guide with Parts, Names & Diagram

Oct 16, 2024 · Learn a skull anatomy with parts, names & detailed diagram. Complete guide for students to explore structure & function of the human skull.

The Skull | Anatomy and Physiology I - Lumen Learning

The cranium (skull) is the skeletal structure of the head that supports the face and protects the brain. It is subdivided into the facial bones and the brain case, or cranial vault (Figure 1). The ...

[Back to Home](#)