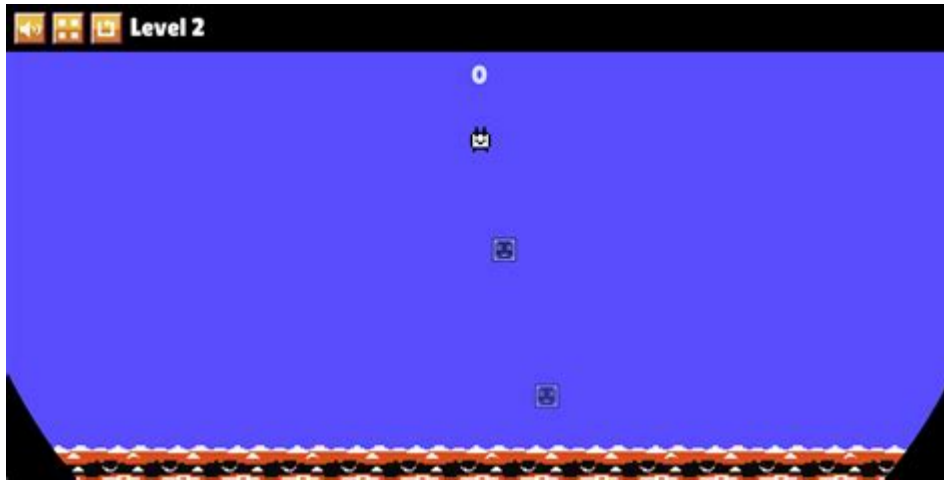


Tamachi Explosive Adventure



Tamachi Explosive Adventure: Uncovering the Thrills and Secrets

Are you ready for an adventure unlike any other? Prepare yourself for a deep dive into the electrifying world of "Tamachi Explosive Adventure," a phrase that hints at a thrilling journey filled with unexpected twists and turns. This comprehensive guide will explore everything you need to know about this exciting concept, from its potential origins and interpretations to the creative possibilities it unlocks. We'll delve into the elements that make it "explosive," examine its narrative potential, and even suggest ways to incorporate it into your own creative projects. Get ready to ignite your imagination!

What is a "Tamachi Explosive Adventure"? Deconstructing the Term

The term "Tamachi Explosive Adventure" itself is intriguing. It combines the seemingly peaceful word "Tamachi" (which, depending on context, could refer to a location, a character name, or even a fictional creature) with the dynamic and action-packed "explosive adventure." This juxtaposition creates a captivating sense of contrast and anticipation. What peaceful setting or seemingly ordinary character could harbor such explosive potential? This inherent mystery is a key element of its appeal.

The "Tamachi" Element: Setting the Stage

The ambiguity of "Tamachi" is its strength. It could represent a quaint, seemingly idyllic village nestled in a vibrant, tropical rainforest, a bustling futuristic city teeming with hidden dangers, or even a mystical realm steeped in ancient secrets. The setting itself becomes a character, contributing to the overall narrative tension. Is it a place of unexpected violence, or is the "explosion" something more metaphorical, perhaps a societal upheaval or a personal transformation?

The "Explosive Adventure" Element: Defining the Thrills

The "explosive adventure" component suggests a high-stakes journey filled with peril, excitement, and unexpected challenges. This could manifest in several ways:

Action-Packed Sequences: High-octane chases, daring escapes, intense combat scenarios, and breathtaking feats of skill.

Intense Emotional Rollercoasters: Sudden betrayals, profound losses, unexpected alliances, and moments of intense vulnerability.

Unexpected Twists and Turns: Unraveling mysteries, uncovering hidden agendas, and facing unexpected consequences.

High Stakes and Consequences: The characters' decisions carry significant weight, and failure can lead to dire repercussions.

Exploring Narrative Potential: Building Your Own Tamachi Explosive Adventure

The beauty of "Tamachi Explosive Adventure" lies in its versatility. It's a framework ripe for creative exploration. Consider these narrative possibilities:

Genre Bending: From Fantasy to Sci-Fi

This concept could seamlessly integrate into various genres. Imagine a fantasy adventure where "Tamachi" is a hidden elven village threatened by a dragon's fiery wrath, or a sci-fi thriller where "Tamachi" is a space station teetering on the brink of collapse. The possibilities are limitless.

Character Development: The Heart of the Adventure

The characters within your "Tamachi Explosive Adventure" will be crucial. Will they be seasoned adventurers, ordinary citizens thrust into extraordinary circumstances, or something entirely unique? Their motivations, relationships, and arcs will shape the narrative's trajectory.

Theme Exploration: Unveiling Deeper Meanings

What underlying themes will you explore? Will it be a story about overcoming adversity, the power of friendship, the struggle for justice, or the consequences of unchecked ambition? A well-defined theme will give your story depth and resonance.

Crafting Your Own Tamachi Explosive Adventure: Practical Tips

To bring your "Tamachi Explosive Adventure" to life, consider these practical steps:

World-building: Develop a detailed and believable world for your story. Think about its history, geography, culture, and inhabitants.

Character Design: Create compelling characters with unique personalities, motivations, and backstories.

Plot Development: Craft a gripping plot with a clear beginning, middle, and end, filled with exciting twists and turns.

Setting the Pace: Balance moments of intense action with periods of quieter reflection to maintain reader engagement.

Conclusion

"Tamachi Explosive Adventure" offers a captivating framework for crafting thrilling and unforgettable narratives. By carefully considering the setting, characters, plot, and themes, you can create a story that resonates with readers and leaves a lasting impression. Embrace the ambiguity, explore the possibilities, and unleash your creativity!

FAQs

1. Can "Tamachi Explosive Adventure" be used for video games? Absolutely! The concept lends itself perfectly to interactive storytelling, allowing for player choices to shape the narrative's outcome.
2. What age group is this concept best suited for? It's adaptable. A children's story could feature less intense action, while an adult novel could explore mature themes.
3. Are there any existing examples of "Tamachi Explosive Adventure" stories? While the exact phrase

tamachi explosive adventure: Japan Through the Looking Glass Alan MacFarlane, 2010-08-06 This entertaining and endlessly surprising book takes us on an exploration into every aspect of Japanese society from the most public to the most intimate. A series of meticulous investigations gradually uncovers the multi-faceted nature of a country and people who are even more extraordinary than they seem. Our journey encompasses religion, ritual, martial arts, manners, eating, drinking, hot baths, geishas, family, home, singing, wrestling, dancing, performing, clans, education, aspiration, sexes, generations, race, crime, gangs, terror, war, kindness, cruelty, money, art, imperialism, emperor, countryside, city, politics, government, law and a language that varies

according to whom you are speaking. Clear-sighted, persistent, affectionate, unsentimental and honest - Alan Macfarlane shows us Japan as it has never been seen before.

tamachi explosive adventure: The Witch Figure Venetia Newall, 2004 The theme of this volume, the witch figure as a malevolent intermediary in folk belief, was chosen to reflect that aspect of Briggs's scholarship exemplified in her study of witchcraft.

tamachi explosive adventure: A History of Japan Kenneth Henshall, 2012-04-17 Japan's impact on the modern world has been enormous. It occupies just one 300th of the planet's land area, yet came to wield one sixth of the world's economic power. Just 150 years ago it was an obscure land of paddy fields and feudal despots. Within 50 years it became a major imperial power - it's so-called 'First Miracle'. After defeat in the Second World War, when Japan came close to annihilation, within 25 years it recovered remarkably to become the world's third biggest economy - it's 'Second Miracle'. It is now not only an economic superpower, but also a technological and cultural superpower. True miracles have no explanation: Japan's 'miracles' do. The nation's success lies in deeply ingrained historical values, such as a pragmatic determination to succeed. The world can learn much from Japan, and its story is told in these pages. Covering the full sweep of Japanese history, from ancient to contemporary, this book explores Japan's enormous impact on the modern world, and how vital it is to examine the past and culture of the country in order to full understand its achievements and responses. Now in its third edition, this book is usefully updated and revised.

tamachi explosive adventure: Yukichi Fukuzawa and the Making of the Modern World Alan Macfarlane, 2018-02-26 Yukichi Fukuzawa is arguably the greatest Japanese social thinker of the last three centuries. In numerous books, in particular *An Outline of a Theory of Civilization* (1973) and *Autobiography* (1972) he outlined his many ideas, not least on the raised status of women. By setting up bookshops, universities, schools, modern accounting, and modern manufacturing he became one of the principal architects of modern Japan, where his image is still on the highest-denomination Japanese banknote. Through his travels to the West and reading of western philosophy, he discovered the secret essence of civilization and modernity and explained this to his countrymen and women. Alan Macfarlane, F.B.A., is an Emeritus Professor of Anthropology at Cambridge University and a Life Fellow of King's College. His website is alanmacfarlane.com.

tamachi explosive adventure: Instructor's Solutions Manual for Glashow's from Alchemy to Quarks James B. Whitenton, Sheldon L. Glashow, 1994-01-01

tamachi explosive adventure: Differential Geometry and Topology A.T. Fomenko, 1987-05-31

tamachi explosive adventure: The Savage Wars of Peace Alan Macfarlane, 2003-02-08 This book aims to solve the problem of how parts of mankind escaped from an apparently inevitable trap of war, famine, and disease in the last 300 years. Through a detailed comparative analysis of English and Japanese history it explores such matters as the destruction of war, decline of famine, importance of certain drinks (especially tea), the use of human excrement, and the effects of housing, clothing, and bathing on human health. It also shows how the English and Japanese controlled fertility through marriage and sexual patterns, biological and contraceptive factors, abortion, and infanticide.

tamachi explosive adventure: Feudalism in Japan Peter Duus, 1993 Offers a comparison between Japanese and Western political institutions in the premodern period. This title contains a brief discussion of the meaning and significance of the term Feudalism, and it suggests ways in which the term might be used for explorations in comparative history. It can serve as a reading for courses on Japanese history.

tamachi explosive adventure: Let Those who Appear Kazuko Shiraishi, Samuel Grolmes, 2002 Work of the Japanese poet translated into English.

tamachi explosive adventure: The Time Ship Enrique Gaspar, 2012-06-26 H. G. Wells wasn't the only nineteenth-century writer to dream of a time machine. The Spanish playwright Enrique Gaspar published *El anacronópete*—He who flies against time—eight years before Wells's influential work appeared. The novel begins at the 1878 Paris Exposition, where Dr. Don Sindulfo unveils his

new invention—which looks like a giant sailing vessel. Soon the doctor embarks on a voyage back in time, accompanied by a motley crew of French prostitutes and Spanish soldiers. The purpose of his expedition is to track down the imprisoned wife of a third-century Chinese emperor, believed to possess the secret to immortality. A classic tale of obsession, high adventure, and star-crossed love, *The Time Ship* includes intricately drawn illustrations from the original 1887 edition, and a critical introduction that argues persuasively for *The Time Ship*'s historical importance to science fiction and world literature.

tamachi explosive adventure: Tokyo 東京, Sumiko Enbutsu, 2007-02-26 Heart of the old city - Sumo quarters - Haiku poet Basho - Kabuki - Fish markets - Samurai feats - Shoguns - Classic temple district - Shops and festivals - Traditional Tokyo neighbourhood.

tamachi explosive adventure: *Ancient Tales and Folklore of Japan* Richard Gordon Smith, 2024-05-01 This enthralling collection brings together over 50 ancient tales from Japanese folklore, gathered and retold by 19th century traveler and naturalist Richard Gordon Smith. During his journeys around Japan, Smith recorded ancient Japanese myths and legends in his personal diaries. The result is a fascinating collection of historical legends from all over Japan, with themes including ghosts, unrequited love, Shinto landscape, tree and ocean spirits, samurai culture and tales driven by Bushido and Buddhist ethics. Gordon Smith's writing combines a realist style with supernatural elements, resulting in an anthology of 'magic realist' tales which will bewitch and captivate readers. ABOUT THE SERIES: Arcturus World Mythology series brings together captivating retellings of myths and legends from different oral traditions, from Greek and Roman to Norse and Native American, offering rich insight into their cultures and beliefs.

tamachi explosive adventure: *The Rise and Fall of Muhammad Bin Tughluq* Mahdī Ḥusain (Agha.), 1935

tamachi explosive adventure: *Gurungs of Nepal* Alan Macfarlane, Indrabahadur Gurung, 1990

tamachi explosive adventure: *Post-Theory* David Bordwell, Noel Carroll, 2012-11 Since the 1970s, the academic study of film has been dominated by Structuralist Marxism, varieties of cultural theory, and the psychoanalytic ideas of Freud and Lacan. With *Post-Theory*, David Bordwell and Noel Carroll have opened the floor to other voices challenging the prevailing practices of film scholarship. Addressing topics as diverse as film scores, national film industries, and audience response. *Post-Theory* offers fresh directions for understanding film.

tamachi explosive adventure: *Pandra II* Erect Sawaru, 2021-08-24 Pandora's Box has finally opened as the academy falls into calamity! The streets are filled with depraved students who are being enslaved by corrupted humans and at the heart of it all, Shirley White has been captured by her greatest enemy. Can she overcome her past and not only save her long lost sister, but save all the people she used along the way?

tamachi explosive adventure: *Colorful Dreams* , 2019-10-29 From VOFAN, the star illustrator of the Monogatari series of novels written by NISIOISIN, comes a full-color artbook of his best personal works. Praised by the fans around the world as The Magician of Light and Shadow from Taiwan, VOFAN is famous for using a vibrant art style combined with unique camera techniques in his art. As the main illustrator for NISIOISIN's novel series for over a decade, VOFAN has illustrated more than 30 book covers and has created dozens of original character designs. Beside his extensive illustration works for NISIOISIN, VOFAN has illustrated magazine covers such as Famitsu and Fancy Frontier Magazine. VOFAN is also the main character designer for the popular Playstation 3 RPG *Time and Eternity*.

tamachi explosive adventure: *Miss DD* Chiyoji, Chiyoji Tomo, 2004-08 This big-busted beauty drives more men nuts. One sight of her and they all become sex machines! Miss DD teh waitress leaves a ball of hair in a bowl of rice? The manager settles for vigorous sex after which he demands her to shave all her pubic hair for HIS rice! Spying on a hung hunk in action drives her so wild sh'e gotta have him till he cries uncle. And more!

tamachi explosive adventure: *Twilight of a Crane* 鶴の黄昏, 1952

tamachi explosive adventure: *Tarikh-i-Firoz Shahi of Shams Siraj Afif Ziyā' al-Dīn Baranī*,

2015

tamachi explosive adventure: Marriage and Love in England Alan Macfarlane, 1986 This book has been awarded the American Sociological Association, Family Section, William J. Goode Award for 1987.

tamachi explosive adventure: Radical Go-Go Baby! Bosshi, 2022-03-29 Bosshi is back with high-spirited women looking to be played around with for hours on end! These bodacious babes with their bouncy butts and busty bosoms are looking for hopeless guys to teach them a thing or two in the bedroom. Whether at home, work, or extracurricular activities, there is no shortage of radical, hot-bodied women looking to spend a sizzling night with a guy or two!

tamachi explosive adventure: Secret Devil-Chan Emu, 2017-03-28 Desperate to lose his virginity, Sou summons a devil named Kogure from the underworld to help with the deed. However, when he discovers that Kogure is a boy, he flees. Thinking the ordeal over, Sou returns home only to find Kogure has insinuated himself into Sou's life and that he's determined to stay until their deal is complete. Desperate to figure out a way to nullify the agreement, Sou finds himself blocked by the devil at every turn. This stubborn incubus is willing to do whatever it takes to win him over, but how will Sou handle a devil in his life?

tamachi explosive adventure: Edo, the City that Became Tokyo Akira Naito, Akira Naitō, 田尾 明, 2003 An illustrated account of the growth and development of Japan's capital city from the 16th to the end of the 19th centuries, this text gives a full and lucid account of the development of Japan's premier urban landscape. Its highly visual approach encompasses historical maps which detail the development of the city. In addition to information on architectural development, the book also provides details concerning technologies, lifestyles and social structures.

tamachi explosive adventure: Culture, Identities and Technology in the Star Wars Films Carl Silvio, Tony M. Vinci, 2014-11-26 Released in May 1977, the original Star Wars movie inaugurated the age of the movie blockbuster. It also redefined the use of cinematic special effects, creating a new textual universe that now stretches through three decades, two trilogies and generations of fascinated viewers. The body of critical analysis that has developed from this epic focuses primarily on the Star Wars universe as a contemporary myth. However, like any fiction, it must also be viewed--and consequently analyzed--as a product of the culture which created it. The essays in this book analyze the Star Wars trilogies as a culturally and historically specific phenomenon. Moving away from the traditional myth-based criticism of the films, the essayists employ a cultural studies model to examine how this phenomenon intersects with social formations such as economics, technology, race and gender. Critical approaches are varied and include political and economic analysis informed by feminism, contemporary race theory, Marxism, new media studies and post-humanism. Among the topics covered are the connections between the trilogies and our own cultural landscape; the problematic issues of race and gender; and the thematic implications of Lucas' presentation of technology. Instructors considering this book for use in a course may request an examination copy here.

tamachi explosive adventure: Comics as a Nexus of Cultures Mark Berninger, Jochen Ecke, Gideon Haberkorn, 2010-03-10 These essays from various critical disciplines examine how comic books and graphic narratives move between various media, while merging youth and adult cultures and popular and high art. The articles feature international perspectives on comics and graphic novels published in the U.S., Canada, Great Britain, Portugal, Germany, Turkey, India, and Japan. Topics range from film adaptation, to journalism in comics, to the current manga boom.

tamachi explosive adventure: The Flower of the Season Nannie Deaderick Betts, 1912

tamachi explosive adventure: Science Fiction from Quebec Amy J. Ransom, 2009-05-20 This first book-length study of French-language science fiction from Canada provides an introduction to the subgenre known as SFQ (science fiction from Quebec). In addition, it offers in-depth analyses of SFQ sagas by Jacques Brossard, Esther Rochon, and Elisabeth Vonarburg. It demonstrates how these multivolume narratives of colonization and postcolonial societies exploit themes typical of postcolonial literatures, including the denunciation of oppressive colonial systems, the utopian hope

for a better future, and the celebration of tolerant pluralistic societies. A bibliography of SFQ available in English translation is included.

tamachi explosive adventure: *Portals of Power* Lori M. Campbell, 2010-03-08 Fantasy writing, like literature in general, provides a powerful vehicle for challenging the status quo. Via symbolism, imagery and supernaturalism, fantasy constructs secondary-world narratives that both mirror and critique the political paradigms of our own world. This critical work explores the role of the portal in fantasy, investigating the ways in which magical nexus points and movement between worlds are used to illustrate real-world power dynamics, especially those impacting women and children. Through an examination of high and low fantasy, fairy tales, children's literature, the Gothic, and science fiction, the portal is identified as a living being, place or magical object of profound metaphorical and cultural significance.

tamachi explosive adventure: *H. Beam Piper* John F. Carr, 2014-02-11 H. Beam Piper is one of science fiction's most enigmatic writers. In 1946 Piper appeared seemingly from out of nowhere, already at the top of his form. He published a number of memorable short stories in the premier science fiction magazine of the time, *Astounding Science Fiction*, under legendary editor John W. Campbell. Piper quickly became friends with many of the top writers of the day, including Lester Del Rey, Fletcher Pratt, Robert Heinlein and L. Sprague de Camp. Piper also successfully made the turn from promising short story writer to major novelist, authoring *Four-Day Planet*, *Cosmic Computer*, *Lord Kalvan of Otherwhen* and *Little Fuzzy*, which was nominated for a Hugo award. Even those who counted Piper among their friends knew very little about the man or his life as a railroad yard bull in Altoona, Pennsylvania. This biography illuminates H. Beam Piper, both the writer and the man, and answers lingering questions about his death. Appendices include a number of Piper's personal papers, a complete bibliography of Piper's works, and an essay on Piper's Terro-Human Future History series.

tamachi explosive adventure: *Stephen R. Donaldson and the Modern Epic Vision* Christine Barkley, 2014-01-10 This critical study analyzes Stephen R. Donaldson's role as a modern writer who uses the fantasy genre to discuss situations and predicaments germane to the modern world. Donaldson reclaims an epic vision in his *Thomas Covenant* novels that is lacking in most modern literature. Chapters demonstrate how this use of epic heroism helps solve seemingly insurmountable problems and provides more meaning and purpose for individuals. As Donaldson's characters learn to transcend their world, the reader is engaged in a serious, enlightened discussion about the need for imagination, responsibility and acceptance to resolve such problems as alienation, pollution, disease and despair.

tamachi explosive adventure: *Science Fiction and the Two Cultures* Gary Westfahl, George Slusser, 2009-06-01 Essays in this volume demonstrate how science fiction can serve as a bridge between the sciences and the humanities. The essays show how early writers like Dante and Mary Shelley revealed a gradual shift toward a genuine understanding of science; how H.G. Wells first showed the possibilities of combining scientific and humanistic perspectives; how writers influenced by Gernsback's ideas, like Isaac Asimov, illustrated the ways that literature could interact with science and assist in its progress; and how more recent writers offer critiques of science and its practitioners.

tamachi explosive adventure: *Pandra* Erect Sawaru, 2019-04-23 Pandora's Box is a legendary artifact known only in ancient fairy tales. The legend states that once found, the person who opens it will be granted any wish they desire. Shirley White knows this isn't just some children's fable and is hellbent on using its power. Her quest has led her to become the newest student at Olympus Royal Magic Academy, the final resting spot of the mythical box.

VPN.net - Hamachi by LogMeIn

Easy to set up. Easy to manage. Easily create, manage and maintain virtual private networks from anywhere with LogMeIn Hamachi, a hosted VPN service, that extends secure LAN-like ...

VPN.net - Hamachi by LogMeIn

LogMeIn Hamachi Security At LogMeIn, we take the security and protection of your important files, data, and personal information very seriously. Our products are architected with security ...

VPN.net - Hamachi by LogMeIn

Hamachi for Linux LogMeIn Hamachi for Linux is a secure VPN client for Linux that offers connectivity to your resources from dispersed environments. Unlike Hamachi for ...

VPN.net - Hamachi by LogMeIn

Easy to set up. Easy to manage. Easily create, manage and maintain virtual private networks from anywhere with LogMeIn Hamachi, a hosted VPN service, that extends secure LAN-like network connectivity to mobile users and distributed teams on-demand over the web. Download now Free for Windows, Mac and Linux

VPN.net - Hamachi by LogMeIn

LogMeIn Hamachi Security At LogMeIn, we take the security and protection of your important files, data, and personal information very seriously. Our products are architected with security being the most important design objective. As part of this commitment our datacenters and source code are continually reviewed by independent, accredited third party audit firms to ensure data ...

VPN.net - Hamachi by LogMeIn

Hamachi for Linux LogMeIn Hamachi for Linux is a secure VPN client for Linux that offers connectivity to your resources from dispersed environments. Unlike Hamachi for Windows/Mac, the Linux client uses the command line and offers a relatively limited set of features. For details, check the Support Center. Hamachi for Linux (x86/x64) Hamachi for Linux is available as DEB ...

[Back to Home](#)