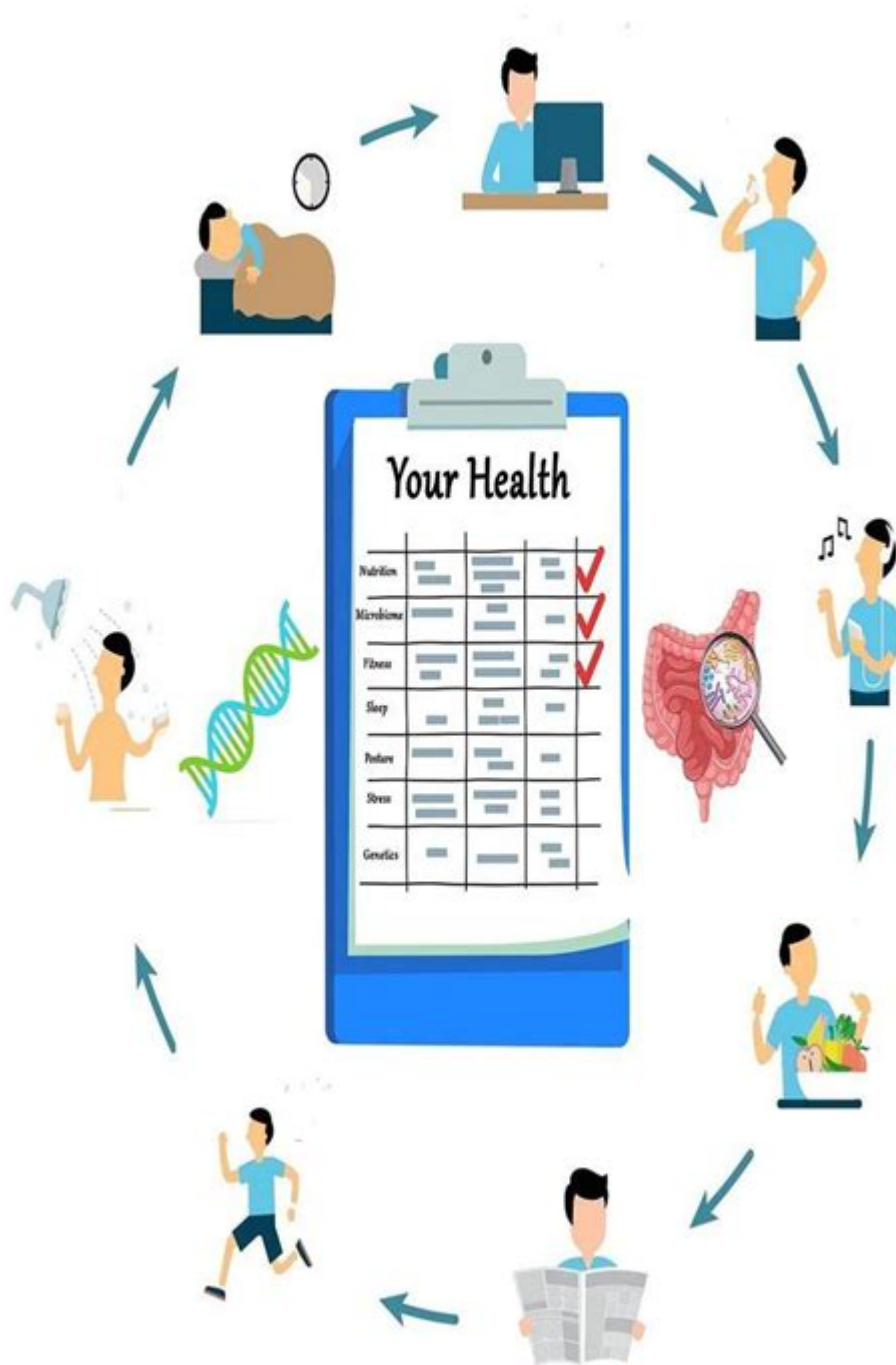


Surveygroup Com Blues Health Assessment



SurveyGroup.com Blues Health Assessment: A Deep Dive

Are you struggling to understand the SurveyGroup.com Blues health assessment? Feeling overwhelmed by the process or unsure of what information it provides? This comprehensive guide

will demystify the SurveyGroup.com Blues health assessment, walking you through its purpose, components, and how to interpret the results. We'll cover everything from pre-assessment preparation to understanding your personalized health recommendations. By the end, you'll feel confident and empowered to utilize this valuable tool for improving your well-being.

What is the SurveyGroup.com Blues Health Assessment?

The SurveyGroup.com Blues health assessment is a digital questionnaire designed to provide a snapshot of your overall health and wellness. Unlike a traditional medical examination, it focuses on self-reported information regarding your lifestyle, habits, and perceived health status. It's a crucial component of many health and wellness programs, often used as a baseline to identify potential risk factors and areas for improvement. The assessment is generally quick and easy to complete, making it accessible to a wide range of individuals.

Understanding the Components of the Assessment

The SurveyGroup.com Blues health assessment typically covers a broad spectrum of health-related topics. While the exact questions may vary depending on the specific program, you can generally expect to encounter questions related to:

1. Demographics and Lifestyle:

This section gathers basic information such as age, gender, occupation, and lifestyle choices like diet, exercise, and smoking habits. This data provides valuable context for interpreting other aspects of the assessment.

2. Physical Health:

This segment delves into your physical health, often including questions about sleep quality, energy levels, chronic conditions, and any recent illnesses or injuries. Accurate responses are crucial for identifying potential health concerns.

3. Mental Health:

Mental well-being is a critical aspect of overall health. The assessment likely includes questions about mood, stress levels, anxiety, and feelings of depression. Openly and honestly answering these questions is essential for receiving personalized recommendations.

4. Social Well-being:

This section assesses your social support network and overall sense of connection with others. Strong social connections are vital for maintaining good mental and physical health. The assessment may inquire about relationships with family, friends, and community involvement.

Interpreting Your SurveyGroup.com Blues Health Assessment Results

Once you've completed the assessment, SurveyGroup.com will typically provide you with a personalized report summarizing your responses. This report often includes:

An overview of your overall health status: A general summary indicating areas of strength and areas needing attention.

Personalized recommendations: Tailored suggestions for improving your health based on your individual responses. This might include lifestyle changes, seeking professional help, or exploring specific resources.

Risk factor identification: The assessment may highlight potential risk factors for various health conditions, encouraging proactive steps to mitigate these risks.

It's crucial to remember that this assessment is not a substitute for professional medical advice. The results should be viewed as a tool for self-reflection and identifying potential areas needing further investigation by a healthcare professional.

Utilizing the Results for Improved Well-being

The value of the SurveyGroup.com Blues health assessment lies in its ability to empower you to take control of your health. By identifying potential weaknesses and leveraging the personalized recommendations, you can:

Develop a personalized wellness plan: Use the assessment as a starting point for creating a comprehensive plan to address identified areas for improvement.

Seek professional guidance: Don't hesitate to consult with your doctor or other healthcare professionals to discuss your results and receive further guidance.

Track your progress: Regularly monitor your progress towards your health goals and make adjustments to your plan as needed.

Conclusion

The SurveyGroup.com Blues health assessment is a valuable tool for gaining insights into your overall health and well-being. By honestly answering the questions and carefully reviewing the results, you can identify areas for improvement and create a personalized plan for a healthier and happier life. Remember, this is a starting point, and seeking professional guidance when necessary is crucial for optimal health outcomes.

Frequently Asked Questions (FAQs)

1. Is the SurveyGroup.com Blues health assessment confidential? Yes, your responses are typically kept confidential and used solely for the purpose of generating your personalized report.
2. How long does it take to complete the assessment? The assessment usually takes between 15-30 minutes to complete, depending on the length and complexity of the questions.
3. What if I have a chronic condition? Accurately reporting any chronic conditions is important for receiving relevant and accurate recommendations.
4. Is the assessment available in multiple languages? This depends on the specific program using the assessment; check the program's website for language availability.
5. Can I retake the assessment? Yes, you can typically retake the assessment at any time to track your progress and make adjustments to your wellness plan.

surveygroup com blues health assessment: The Cultural Cold War Frances Stonor Saunders, 2013-11-05 During the Cold War, freedom of expression was vaunted as liberal democracy's most cherished possession—but such freedom was put in service of a hidden agenda. In *The Cultural Cold War*, Frances Stonor Saunders reveals the extraordinary efforts of a secret campaign in which some of the most vocal exponents of intellectual freedom in the West were working for or subsidized by the CIA—whether they knew it or not. Called the most comprehensive account yet of the [CIA's] activities between 1947 and 1967 by the New York Times, the book presents shocking evidence of the CIA's undercover program of cultural interventions in Western Europe and at home, drawing together declassified documents and exclusive interviews to expose the CIA's astonishing campaign to deploy the likes of Hannah Arendt, Isaiah Berlin, Leonard Bernstein, Robert Lowell, George Orwell, and Jackson Pollock as weapons in the Cold War. Translated into ten languages, this classic work—now with a new preface by the author—is a real contribution to popular understanding of the postwar period (*The Wall Street Journal*), and its story of covert cultural efforts to win hearts and minds continues to be relevant today.

surveygroup com blues health assessment: Turning Victory Into Success , 2004

surveygroup com blues health assessment: The CDC Field Epidemiology Manual Centers for Disease Control and Prevention (U.S.), 2019 A NEW AND ESSENTIAL RESOURCE FOR THE PRACTICE OF EPIDEMIOLOGY AND PUBLIC HEALTH The CDC Field Epidemiology Manual is a definitive guide to investigating acute public health events on the ground and in real time. Assembled and written by experts from the Centers for Disease Control and Prevention as well as other leading public health agencies, it offers current and field-tested guidance for every stage of an outbreak investigation -- from identification to intervention and other core considerations along the way. Modeled after Michael Gregg's seminal book *Field Epidemiology*, this CDC manual ushers investigators through the core elements of field work, including many of the challenges inherent to outbreaks: working with multiple state and federal agencies or multinational organizations; legal considerations; and effective utilization of an incident-management approach. Additional coverage includes: ♦ Updated guidance for new tools in field investigations, including the latest technologies for data collection and incorporating data from geographic information systems (GIS) ♦ Tips for investigations in unique settings, including healthcare and community-congregate sites ♦ Advice for responding to different types of outbreaks, including acute enteric disease; suspected biologic or toxic agents; and outbreaks of violence, suicide, and other forms of injury For the ever-changing

public health landscape, The CDC Field Epidemiology Manual offers a new, authoritative resource for effective outbreak response to acute and emerging threats. *** Oxford University Press will donate a portion of the proceeds from this book to the CDC Foundation, an independent nonprofit and the sole entity created by Congress to mobilize philanthropic and private-sector resources to support the Centers for Disease Control and Prevention's critical health protection work. To learn more about the CDC Foundation, visit www.cdcfoundation.org.

surveygroup com blues health assessment: A Companion to Contemporary Britain 1939 - 2000 Paul Addison, Harriet Jones, 2008-04-15 A Companion to Contemporary Britain covers the key themes and debates of 20th-century history from the outbreak of the Second World War to the end of the century. Assesses the impact of the Second World War Looks at Britain's role in the wider world, including the legacy of Empire, Britain's 'special relationship' with the United States, and integration with continental Europe Explores cultural issues, such as class consciousness, immigration and race relations, changing gender roles, and the impact of the mass media Covers domestic politics and the economy Introduces the varied perspectives dominating historical writing on this period Identifies the key issues which are likely to fuel future debate

surveygroup com blues health assessment: *Linking Legacies* , 1997

surveygroup com blues health assessment: The Iraq War Anthony H. Cordesman, 2003 In April of 2003, a stunned world looked on as the armed forces of the United States and Britain conducted a lightning-fast military campaign against Iraq. Confounding predictions of failure, the Anglo-American victory brought down not just the Iraqi regime, but also much of the conventional wisdom about modern war. But even as U.S. and British forces occupied Basra, Tikrit, and Mosul, the Iraqi nation slipped into anarchy - and new military and security challenges emerged. In this book, respected military analyst Anthony Cordesman provides the first in-depth examination of the key issues swirling around the most significant U.S. war since Vietnam. Finding answers is essential if we are to understand the United States' awesome power and its place in a new age of international terror and regional conflict. Finding answers is also essential if we are to draw the proper lessons and understand the new challenges of conflict termination, peacemaking, and nation building.--BOOK JACKET.

surveygroup com blues health assessment: *Transit Advertising Revenue* Beverly R. Silverberg, National Research Council (U.S.). Transportation Research Board, Transit Cooperative Research Program, 1998 Offers information from selected North American and other transit agencies about the existing environment for advertising on transit property and describes agency experiences. It also explores innovative revenue-generating practices.

surveygroup com blues health assessment: Fundamentals of Data Visualization Claus O. Wilke, 2019-03-18 Effective visualization is the best way to communicate information from the increasingly large and complex datasets in the natural and social sciences. But with the increasing power of visualization software today, scientists, engineers, and business analysts often have to navigate a bewildering array of visualization choices and options. This practical book takes you through many commonly encountered visualization problems, and it provides guidelines on how to turn large datasets into clear and compelling figures. What visualization type is best for the story you want to tell? How do you make informative figures that are visually pleasing? Author Claus O. Wilke teaches you the elements most critical to successful data visualization. Explore the basic concepts of color as a tool to highlight, distinguish, or represent a value Understand the importance of redundant coding to ensure you provide key information in multiple ways Use the book's visualizations directory, a graphical guide to commonly used types of data visualizations Get extensive examples of good and bad figures Learn how to use figures in a document or report and how employ them effectively to tell a compelling story

surveygroup com blues health assessment: Music and the Functions of the Brain: Arousal, Emotions, and Pleasure Mark Reybrouck, Tuomas Eerola, Piotr Podlipniak, 2018-04-12 Music impinges upon the body and the brain. As such, it has significant inductive power which relies both on innate dispositions and acquired mechanisms and competencies. The processes are partly

autonomous and partly deliberate, and interrelations between several levels of processing are becoming clearer with accumulating new evidence. For instance, recent developments in neuroimaging techniques, have broadened the field by encompassing the study of cortical and subcortical processing of the music. The domain of musical emotions is a typical example with a major focus on the pleasure that can be derived from listening to music. Pleasure, however, is not the only emotion to be induced and the mechanisms behind its elicitation are far from understood. There are also mechanisms related to arousal and activation that are both less differentiated and at the same time more complex than the assumed mechanisms that trigger basic emotions. It is imperative, therefore, to investigate what pleasurable and mood-modifying effects music can have on human beings in real-time listening situations. This e-book is an attempt to answer these questions. Revolving around the specificity of music experience in terms of perception, emotional reactions, and aesthetic assessment, it presents new hypotheses, theoretical claims as well as new empirical data which contribute to a better understanding of the functions of the brain as related to musical experience.

surveygroup com blues health assessment: *The Multiplex in India* Adrian Athique, Douglas Hill, 2009-12-17 During the decade of its existence in India, the multiplex cinema has been very much a sign of the times – both a symptom and a symbol of new social values. Indicative of a consistent push to create a ‘globalised’ consuming middle class and a new urban environment, multiplex theatres have thus become key sites in the long-running struggle over cultural legitimacy and the right to public space in Indian cities. This book provides the reader with a comprehensive account of the new leisure infrastructure arising at the intersection between contemporary trends in cultural practice and the spatial politics that are reshaping the cities of India. Exploring the significance, and convergence, of economic liberalisation, urban redevelopment and the media explosion in India, the book demonstrates an innovative approach towards the cultural and political economy of leisure in a complex and rapidly-changing society. Key arguments are supported by up-to-date and substantive field research in several major metros and second tier cities across India. Accordingly, this book employs analytical frameworks from Media and Cultural Studies, and from Urban Geography and Development Studies in a wide-ranging examination of the multiplex phenomenon.

surveygroup com blues health assessment: *Autism Across the Lifespan* , 2018 ASD is a common developmental disability, currently identified in 1 of 59 children in the United States and occurring across all racial, ethnic, and socioeconomic groups. Occupational therapy clinicians must have thorough knowledge of factors related to ASD, human function and performance, occupation across multiple contexts, and the interactions among them to make sound intervention decisions. -- back

surveygroup com blues health assessment: *Applied Probability and Statistics* Mario Lefebvre, 2007-04-03 This book moves systematically through the topic of applied probability from an introductory chapter to such topics as random variables and vectors, stochastic processes, estimation, testing and regression. The topics are well chosen and the presentation is enriched by many examples from real life. Each chapter concludes with many original, solved and unsolved problems and hundreds of multiple choice questions, enabling those unfamiliar with the topics to master them. Additionally appealing are historical notes on the mathematicians mentioned throughout, and a useful bibliography. A distinguishing character of the book is its thorough and succinct handling of the varied topics.

surveygroup com blues health assessment: *Race and Ethnicity* Stephen Spencer, 2014-03-14 Broad-ranging and comprehensive, this completely revised and updated textbook is a critical guide to issues and theories of ‘race’ and ethnicity. It shows how these concepts came into being during colonial domination and how they became central – and until recently, unquestioned – aspects of social identity and division. This book provides students with a detailed understanding of colonial and post-colonial constructions, changes and challenges to race as a source of social division and inequality. Drawing upon rich international case studies from Australia, Guyana,

Canada, Malaysia, the Caribbean, Mexico, Ireland and the UK, the book clearly explains the different strands of theory which have been used to explain the dynamics of race. These are critically scrutinised, from biological-based ideas to those of critical race theory. This key text includes new material on changing multiculturalism, immigration and fears about terrorism, all of which are critically assessed. Incorporating summaries, chapter-by-chapter questions, illustrations, exercises and a glossary of terms, this student-friendly text also puts forward suggestions for further project work. Broad in scope, interactive and accessible, this book is a key resource for undergraduate students of 'race' and ethnicity across the social sciences.

surveygroup com blues health assessment: History by the Lake Clarence Baldwin Davis, 2005 Historical essays mainly prepared by students at Marian College, Fond du Lac, Wisconsin from 2000-2004.

surveygroup com blues health assessment: One Degree of Change Larry Jackson, 2015-01-23 This book was written for the person who understands that there is so much more for them to accomplish but just can't seem to breakthrough. One of the traps in life is being satisfied with a 211 degree life. This is a very good life and many would characterize it as a successful life. But for the person who should be living at 212 degrees they feel like the oyster with sand in its shell, very agitated. Many times they can't put their finger on what is wrong or what is needed. Even the Christian living a good life before God can feel that something is missing. The thing missing is their purpose. They love the Lord and all that He provides but they realize there is more they should be doing for Him. If you feel like you are not walking in your purpose then this is the book for you! One Degree of Change: How to Succeed Now! will open your heart and mind to just how close you really are to accomplishing what the Lord has designed you for. It will provide much needed answers for your advancement. Because you are only one degree from the success you desire.

surveygroup com blues health assessment: Isles of Refuge Mark J. Rauzon, 2000-11-01 In *Isles of Refuge*, the first book solely devoted to the Northwestern Hawaiian Islands, field biologist Mark Rauzon shares his extensive, first-hand knowledge of their natural history while providing an engaging narrative of his travels. Braving seasickness, bad weather, and biting bird ticks, he journeyed from Nihoa to Kure to study and photograph plants and animals for the U.S. Fish and Wildlife Service: rare palms, sharks, turtles, seals, and thousands of birds--finches, terns, petrels, noddies, shearwaters, curlews, boobies, tropicbirds, ducks, and albatrosses, or gooneys, famed throughout the Pacific for their flying prowess and bizarre breeding rituals. Isolation and access restrictions have led to the recovery of many of the Northwestern Hawaiian Islands' animal and plant populations to pre-exploitation levels, but they have also resulted in the general public's ignorance of the islands and their ecosystems. Informative and enjoyable, *Isles of Refuge* invites readers to learn more about the history and natural wonders of this invaluable resource.

surveygroup com blues health assessment: Computer Aided Architectural Design Futures 2005 Bob Martens, Andre Brown, 2005-12-06 MARTENS Bob and BROWN Andre Co-conference Chairs, CAAD Futures 2005 Computer Aided Architectural Design is a particularly dynamic field that is developing through the actions of architects, software developers, researchers, technologists, users, and society alike. CAAD tools in the architectural office are no longer prominent outsiders, but have become ubiquitous tools for all professionals in the design disciplines. At the same time, techniques and tools from other fields and uses, are entering the field of architectural design. This is exemplified by the tendency to speak of Information and Communication Technology as a field in which CAAD is embedded. Exciting new combinations are possible for those, who are firmly grounded in an understanding of architectural design and who have a clear vision of the potential use of ICT. CAAD Futures 2005 called for innovative and original papers in the field of Computer Aided Architectural Design, that present rigorous, high-quality research and development work. Papers should point towards the future, but be based on a thorough understanding of the past and present.

surveygroup com blues health assessment: Musicians and the Prevention of Hearing Loss Marshall Chasin, 1996 CONTENTS Hearing and Hearing Loss--An Introduction. Factors Affecting

Hearing Loss. Development of Acoustic Principles. The Physics of Musical Instruments. Hearing Protection. Clinical Assessment of Musicians - Audiologist as a Detective. Room Acoustics. Clinical and Environmental Strategies to Reduce Music Exposure. The Human Performance Approach to Prevention. References. Index.

surveygroup com blues health assessment: *Business Periodicals Index* , 1989

surveygroup com blues health assessment: *A History of Western Appreciation of English-translated Tang Poetry* Lan Jiang, 2018-03-08 This book examines the development of English-translated Tang poetry and its propagation to the Western world. It consists of two parts, the first of which addresses the initial stage of English-translated Tang poetry's propagation, and the second exploring its further development. By analyzing the historical background and characteristics of these two stages, the book traces the trend back to its roots, discusses some well-known early sinologists and their contributions, and familiarizes readers with the general course of Tang poetry's development. In addition, it presents the translated versions of many Tang poems. The dissemination of Tang poetry to the Western world is a significant event in the history of cross-cultural communication. From the simple imitation of poetic techniques to the acceptance and identification of key poetic concepts, the Tang poetry translators gradually constructed a classic "Chinese style" in modern American poetry. Hence, the traditional Chinese culture represented by Tang poetry spread more widely in the English-speaking world, producing a more lasting impact on societies and cultures outside China - and demonstrating the poetry's ability to transcend the boundaries of time, region, nationality and culture. Due to different cultural backgrounds, the Tang poets or poems admired most by Western readers may not necessarily receive high acclaim in China. Sometimes language barriers and cultural differences make it impossible to represent certain allusions or cultural and ethnic concepts correctly during the translation process. However, in recent decades, the translation of Tang poetry has evolved considerably in both quantity and quality. As culture is manifested in language, and language is part of culture, the translation of Tang poetry has allowed Western scholars to gain an unprecedented understanding of China and Chinese culture.

surveygroup com blues health assessment: *Alternative to Futility* Elton Trueblood, 1966

surveygroup com blues health assessment: *Corporate Communication* Paul A. Argenti, 2012 *Corporate Communication*, 6th Edition shows readers the importance of creating a coordinated corporate communication system, and describes how organizations benefit from important strategies and tools to stay ahead of the competition. Throughout the book, cases and examples of company situations relate to the chapter material. These cases provide readers with the opportunity to participate in real decisions that managers had to make on a variety of real problems.

surveygroup com blues health assessment: *Roadway Lighting (ANSI/IES RP-8-14)* Illuminating Engineering Society, 2014-10-10

surveygroup com blues health assessment: *Killing Our Own* Harvey Wasserman, Norman Solomon, 1982 Provides a detailed investigation of various facets of America's involvement with nuclear power--including both wartime and peacetime applications--and exposes the dangers of and potential disasters in the nuclear industry

surveygroup com blues health assessment: *The I-search Paper* Ken Macrorie, 1988 This revised and retitled edition of *Searching Writing* includes two additional I-Search papers, one by a teacher, and a new chapter entitled *The Larger Context*, which shows how the I Search concept can work throughout the whole curriculum in school and college. As with the first edition, *The I-Search Paper* is more than just a textbook; it's a new form of instructional help -- a context book -- that shows students what authority is in matters of learning and invites them to join the author and teacher in the educational movement called *Writing to Learn*. To put this book in the hands of all the students in the course is not only to help them carry out an I-Search but to introduce them in a delightful way to the resources and tools of intellectual inquiry -- but one that never forgets the emotional or physical side of human activity. This is a rare textbook that treats students as partners in learning. It shows what it is to take charge of one's own learning and suggests that this move is one that productive people keep making throughout their lives.

surveygroup com blues health assessment: Environmental Science : a Canadian Perspective Bill Freedman, 2006

surveygroup com blues health assessment: Digital Media, Friendship and Cultures of Care Paul Byron, 2022-05-30 This book explores how digital media can extend care practices among friends and peers, researching young people's negotiations of sexual health, mental health, gender/sexuality, and dating apps, and highlighting the need for a multifocal approach that centres young people's expertise. Taking an everyday practice approach to digital and social media, *Digital Media, Friendship and Cultures of Care* emphasises that digital media are not novel but integrated into daily life. The book introduces the concept of digital cultures of care as a new framework through which to consider digital practices of friendship and peer support, and how these play out across a range of platforms and networks. Challenging common public and academic concerns about peer and friendship influences on young people, these terms are unpacked and reconsidered through attention to digital media, drawing on qualitative research findings to argue that digital and social media have created important new opportunities for emotional support, particularly for young people and LGBTQ+ people who are often excluded from formal healthcare and social support. This book and its comprehensive focus on friendship will be of interest to a range of readers, including academics, students, health promoters, educators, policymakers, and advocacy groups for either young people, LGBTQ+ communities, or digital citizenship. Academics most interested in this book will be working in digital media studies, health sociology, critical public health, health communication, sexualities, cultural studies, sex education, and gender studies.

surveygroup com blues health assessment: The Oxford Handbook of Singing Graham F. Welch, David M. Howard, John Nix, 2019-04-04 Singing has been a characteristic behaviour of humanity across several millennia. Chorus America (2009) estimated that 42.6 million adults and children regularly sing in one of 270,000 choruses in the US, representing more than 1:5 households. Similarly, recent European-based data suggest that more than 37 million adults take part in group singing. The *Oxford Handbook of Singing* is a landmark text on this topic. It is a comprehensive resource for anyone who wishes to know more about the pluralistic nature of singing. In part, the narrative adopts a lifespan approach, pre-cradle to senescence, to illustrate that singing is a commonplace behaviour which is an essential characteristic of our humanity. In the overall design of the Handbook, the chapter contents have been clustered into eight main sections, embracing fifty-three chapters by seventy-two authors, drawn from across the world, with each chapter illustrating and illuminating a particular aspect of singing. Offering a multi-disciplinary perspective embracing the arts and humanities, physical, social and clinical sciences, the book will be valuable for a broad audience within those fields.

surveygroup com blues health assessment: Who Is Jesse Flood? Malachy Doyle, 2002-09-07 A rollicking novel, written in journalistic form, follows the life of Jesse, a teenage boy trying to discover who he really is, as he shares his humorous views on being a teenager.

surveygroup com blues health assessment: The Hawaiians of Old Betty Dunford, 1987-12-01 Ancient Hawaiian culture for young learners. Includes illustrations, pronunciation guide, bibliography, charts, tables, and appendix. RL4

surveygroup com blues health assessment: Red Pine Scale James L. Bean, 1971

surveygroup com blues health assessment: No Excuses Stephan Thernstrom, Abigail Thernstrom, 2009-07-14 Black and Hispanic students are not learning enough in our public schools, and their typically poor performance is the most important source of ongoing racial inequality in America today—thus, say Abigail and Stephan Thernstrom, the racial gap in school achievement is the nation's most critical civil rights issue and an educational crisis; it's no wonder that *No Child Left Behind*, the 2001 revision of the Elementary and Secondary Education Act, made closing the racial gap in education its central goal. An employer hiring the typical Black high school graduate or the college that admits the average Black student is choosing a youngster who has only an eighth-grade education. In most subjects, the majority of twelfth-grade Black students do not have even a partial mastery of the skills and knowledge that the authoritative National Assessment of

Educational Progress calls fundamental for proficient work at their grade. No Excuses marshals facts to examine the depth of the problem, the inadequacy of conventional explanations, and the limited impact of Title I, Head Start, and other familiar reforms. Its message, however, is one of hope: Scattered across the country are excellent schools getting terrific results with high-needs kids. These rare schools share a distinctive vision of what great schooling looks like and are free of many of the constraints that compromise education in traditional public schools. In a society that espouses equal opportunity we still have a racially identifiable group of educational have-nots—young African Americans and Latinos whose opportunities in life will almost inevitably be limited by their inadequate education. When students leave high school without high school skills, their futures—and that of the nation—are in jeopardy. With successful schools already showing the way, no decent society can continue to turn a blind eye to such racial and ethnic inequality.

surveygroup com blues health assessment: Connections Maths Ajit Kalra, James Stammel, 2005 Designed for the new syllabus, this book will engage and support students of all abilities. Presented in vibrant full colour format with photographs and cartoons. Connections Maths will motivate learning and appeal to all students. Each book comes with an interactive CD-ROM with extra learning material.

surveygroup com blues health assessment: The Canadian Hydrographic Service Canadian Hydrographic Service, 1969

surveygroup com blues health assessment: Pollution Abstracts , 1985-11

surveygroup com blues health assessment: Goal Analysis Robert Frank Mager, 2012-10-01

surveygroup com blues health assessment: Campus Heritage Richard P. Dober, 2005

surveygroup com blues health assessment: Perjury Allen Weinstein, 1997 On August 3, 1948, Time magazine editor Whittaker Chambers made a stunning allegation before the House Un-American Activities Committee: Alger Hiss, former high-ranking State Department official, had served with him in the Communist underground. Hiss's defense was the gripping story of its day, and the question of his guilt remains an enigma. This book provides fascinating insights into the case and into the American political life of the 1930s and 1940s. of photos.

surveygroup com blues health assessment: Iraq's Nuclear Mirage Imad Khadduri, 2003 This book is a testimony of an Iraqi nuclear scientist who worked for the Iraqi Atomic Energy Commission over a period of thirty years. The period covers the peaceful beginnings of the Iraqi nuclear program, its gradual and then sudden turn into a weapon program and its final demise and disintegration. Imad Khadduri elucidates about his educational background, commitment to the Iraqi nuclear program, involvement in its various directions and ultimate disengagement and escape from Iraq. During half a year before the occupation of Iraq, he embarked on a lonely battle to counter the misinformation campaign mounted by the United States and Britain and fueled by people with questionable credibility.

surveygroup com blues health assessment: Roughing it in Suburbia Valerie J. Korinek, 1996

Gmail - Email from Google

Gmail is email that's intuitive, efficient, and useful. 15 GB of storage, less spam, and mobile access.

About Gmail - Email. Chat. Video. Phone. - Google

Gmail goes beyond ordinary email. You can video chat with a friend, ping a colleague, or give someone a ring – all without leaving your inbox. The ease and simplicity of Gmail is available ...

Gmail - Wikipedia

It is accessible via a web browser (webmail), mobile app, or through third-party email clients via the POP and IMAP protocols. Users can also connect non-Gmail e-mail accounts to their ...

Gmail - Email by Google on the App Store

Aug 12, 2025 · The official Gmail app brings the best of Gmail to your iPhone or iPad with robust security, real-time notifications, multiple account support and search that works across all your ...

Gmail - Google Accounts

Gmail is email that's intuitive, efficient, and useful. 15 GB of storage, less spam, and mobile access.

Sign in - Google Accounts

Not your computer? Use a private browsing window to sign in. Learn more about using Guest mode

[Gmail: Private and secure email at no cost | Google Workspace](#)

Discover how Gmail keeps your account & emails encrypted, private and under your control with the largest secure email service in the world.

Google

Search the world's information, including webpages, images, videos and more. Google has many special features to help you find exactly what you're looking for.

Gmail: Private & Secure Email for Personal or Business | Google ...

Access your inbox anytime, anywhere Gmail is available on your computer, phone, watch or tablet, so you can stay connected when it matters most. Count on Google's secure, resilient ...

Sign in to Gmail - Computer - Gmail Help - Google Help

To open Gmail, you can log in from a computer, or add your account to the Gmail app on your phone or tablet. Once you've signed in, check your email by opening your inbox.

Microsoft Outlook (formerly Hotmail): Free email and calendar ...

Sign in to your Outlook.com, Hotmail.com, MSN.com or Live.com account. Download the free desktop and mobile app to connect all your email accounts, including Gmail, Yahoo, and ...

[Sign in to your account - Outlook](#)

Access your Outlook email and calendar, plus Office Online apps like Word, Excel, and PowerPoint.

Outlook

Outlook ... Outlook

Create your Microsoft account - Outlook

Use private browsing if this is not your device. Learn more

[Outlook - free personal email and calendar from Microsoft](#)

Access free Outlook email and calendar, plus Office Online apps like Word, Excel, and PowerPoint.

Continue - Outlook

Continue - Outlook ... Continue

Outlook - free personal email and calendar from Microsoft

#Outlook ads.txt #v43 06.19.2025 #contact msftadstxt @ microsoft.com with any questions #use Microsoft Ads.txt Intake Form v1 when requesting changes to this file ...

Outlook - free personal email and calendar from Microsoft

Microsoft Outlook

Outlook

```
{"cacheVersion":"20250530004.10","cacheHash":"DefaultHash","buildVariant":"Default","staticFiles":["//res.public.onecdn.static.microsoft/owamail/hashed-v1/scripts/owa ...
```

Office 365 - Outlook

Your selfless dedication to your fellow citizens of the Internet and heroic participation in this program are helping us fight the great evil of this world known as spam.

[Back to Home](#)